



ESTD:2007

MANDAVA INSTITUTE OF ENGINEERING AND ECHNOLOGY

(Sponsored by Sri Siva Kameswari Educational Society)

Approved by AICTE, New Delhi, Affiliated to JNTU Kakinada

Vidya Nagar, JAGGAIHPET-521175, Krishna Dist., A.P., INDIA



10.0 Mandatory Disclosure		
1	Name of the Institution	MANDAVA INSITITUTE OF ENGINEERING AND TECHNOLOGY
	Address of the Institution	Vidya Nagar, NTR District, Jaggaiahpet, Andhra Pradesh, Pin: 521175
	Phone number with STD code	08654-226768
	Mobile Number	9121214607
	Email	ff.principal@jntuk.ac.in
2	Name of the Society	SRI SIVAKAMESWARI EDUCATIONAL SOCIETY
	Address of the Society	#396/2AH, Vidya Nagar, NTR District, Jaggaiahpet, Andhra Pradesh, Pin: 521175
	Phone number with STD code	8008326868
	Mobile Number	8688326868
	Email	mietenggcollege@gmail.com
3	Name of the Principal	Dr. Bdeeti Syam
	Address of the Principal	Vidya Nagar, NTR District, Jaggaiahpet, Andhra Pradesh, Pin: 521175
	Phone number with STD code	08654-226768
	Mobile Number	9121214607
	Email	ff.principal@jntuk.ac.in
4	Name of the Affiliating University	JNTUK, KAKINADA
5	Governance	
• Members of Administrative Committee		
	Sri Mandava Sujatha Chairman	Chairman-SSKE
	Mr. Mandava Sridhar Secretary	Secretary-SSKE

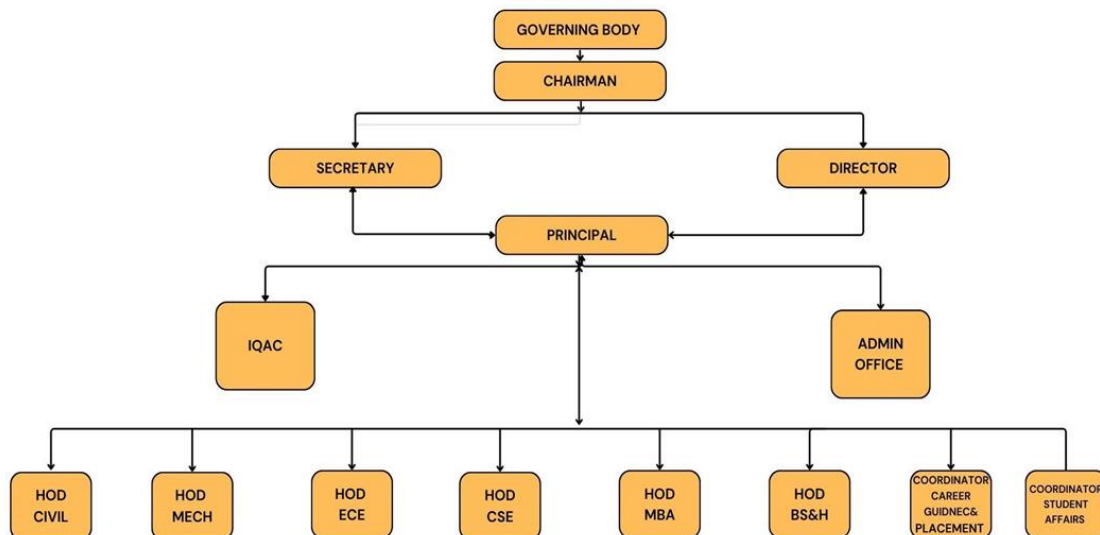
	Mrs. Mandava Kusuma Kumari Treasurer	Treasurer-SSKE
	Mr. Vasireddy Manoj, Member	Managing Director, Resins & Allied Products DRDO & ISRO based MSME
	Mrs. Moothukuri Suseela Member	HOD, Dept of ECE
	Mr. Fateh Mohammad Member	Associate Professor, Dept of ME
	Mr. Buddi Nagesh Member	Accounts Officer
	Dr. Banavathu Balakrishna Member	Professor JNTUK
	State Govt. Nominee Member	State Govt. Nominee
	Mrs. Damacharla Prasanna Member	Member-SSKE
	Mrs. DamacharlaKiranmayee Member	Member-SSKE
	Mr. Vallabaneni Sudhakar Chowdary Member	Managing Director, Mohan Spintex INDIA Limited
	Dr. Baddeti Syam Member	Principal
	• Members of Academic Council	
	Prof. Baddeti Syam	Principal, MIET, Professor, Dept.of ECE
	Mr.Shaik Nanne Saheb	Controller of Examinations, Professor, Dept.of MECH
	Mr.Yarram Narasimha Rao	I/c.I ³ C&MoUs,Dept.of MBA
	Mr.B Nagarjuna Singh	I/c.IQAC, Dept.of ECE
	Mrs. Mandava Kusuma Kumari	Dean Planning & Execution,
	Prof.T Venu Gopala Rao	R&D, Professor, Dept.of CE
	Mr Fathe Mohamad	I/c, T&P, Dept.of MECH
	Prof.Banothu Venkakati	Professor, HoD,Dept.of CE
	Mr.Kodamala Naresh	Associate Professor, HoD, Dept.of CE
	Prof.B Sujatha	Professor,Dept.of CE
	Mrs.Oruganti Bhavya Sri	Associate Professor, HoD, Dept.of CSE
	Mrs. Moothukuri Suseela	Associate Professor, HoD, Dept.of ECE
	Prof.Y B V Lakshmi	Professor,Dept.of ECE
	Mr.A Radha Krishna	Associate Professor, HoD, Dept.of MECH
	Mr.Yarram Narasimha Rao	Associate Professor, HoD,Dept.of MBA

	Mr.T V Rammohana Rao	Associate Professor, HoD,Dept.of BS&H
	Prof G Venkateswara RAO	Professor, Dept.of BS&H
	Prof.A Vasmsi Krishna	Prof. of ECE, RKCE,Ibhrahimpatanam
	Prof.B Prasanna Kumar	Prof. of CSE,Guntur Eng, College, Guntur
	Sri Bapi Raju	Advocate / Addl. PP, III Addl. Sessions Court-cum-Family Court,
	Mr G Gopala Rao	Associate Professor, Faculty I/c

• Internal Quality Assurance Cell (IQAC) Committee

	Mr. B NAGARJUNA SINGH	IOAC Coordinator
	Mr.FATHE MOHAMAD	IQAC MUMBER,
	Mr.G GOPALARAO	IQAC MUMBER,
	Mr.ADIRAJU RADHA KRISHNA	HoD ,Mechanical Engineering
	Mr.BANOTHU VENKATI	HoD, Civil Engineering
	Mrs.ORUGANTI BHAVYA SRI	HoD. Computer Science & Engineering
	Mrs.MOTHUKURI SUSEELA	HoD, Electronics & Communication Engineering
	Mr.YARRAM NARASIMHA RAO	HoD,Master of Business Administration
	Mr.T V RAMMOHANA RAO	HoD, BS&H
	<ul style="list-style-type: none"> Frequency of Board Meetings and Academic Advisory Committee 	2 Times in a year

Organization Chart and Process



Nature and Extent of Involvement of Faculty and Students in Academic Affairs /Improvements

- The MIET system of administration is well designed& properly structured in decentralized manner with clearly defined roles for Governing body (GB),

Administrative committee, Academic council (AC), Board of studies (BoS), Finance committee (FC), Internal quality assurance committee(IQAC), Academic advisory committee (AAC), Grievance red resale committee (GRC), Student activity center (SAC), Class review committee (CRC), Anti ragging committee, Anti sexual harassment cell and Academic& student support centers with composition as per norms. Management, Principal, Deans, HoDs, Industry experts, University nominees, Alumni, faculty, staff, parents and students are involved in the policy development, decision making& policy implementation as required. Functions/ Responsibilities are clearly defined for each committee/ Administrator to realize the clearly defined vision admission of the institute. Institute management supports every academic, research& student activity with required infrastructural facilities, operational support, finance and other resources time to time. Healthy working environment is created by the management in the institute with academic freedom, transparency, accountability and faculty on us to the institute at each level of administration. Every one works with dedication, commitment & best efforts with mutual support in an academic eco system for the benefit of student community. The faculty & students periodically meet to assess the goals/ objectives set and the achievements under the guidance of the principal

- Dean Academic Affairs (AA) along with his AA office team seamlessly integrates Teaching-Learning, Research, Innovation& Incubation and Entrepreneurship (I²RE) dynamically with various academic& co curricular activities with due approval of AAC of the institute. Dean AA administers the academic programmes and supports principal to explore new instructional& quality initiatives. Dean AA coordinates the activity of curriculum revision periodically and prepares the departments, faculty & staff to take up the challenges of academic autonomy at the institute level. Dean AA is

responsible to set up mechanism for faculty evaluation every semester and generating a constructive feedback for faculty improvement. Dean AA is responsible to set up mechanism for user friendly feedback mechanism from students on courses they have taken

- Prof. I/c IQAC & his faculty team regularly organizes academic quality assurance activities by inviting faculty & industry experts from peer institutions to interact with faculty and students of various departments and ensures for academic quality in the institution. Prof. I/c IQAC oversee faculty recruitment and reviews for reappointment and promotion every year. IQAC publishes academic, research & other achievements every year by capturing required data from all departments/sections.
- Controller of examinations (CoE) along with his exam branch team ensures for successful conduction of examinations, authentic coding & valuation, tabulation of data & outcome based education (OBE) report generation, timely publication of result and award of degree. Prof. I/c Industry institute interaction cell (I³C) & MoUs will be in front to help UG & PG students to undergo mandatory internships and industrial training with collaboration of industries & CII with the help of department I³C coordinators.
- Prof. I/c Training & Placement (T&P) and his team along with department T&P coordinators and student volunteers takes care of training the students for company specific training, inviting the industry personnel and alumni for core & software placements and ensures for gradual increase in number of placements every year for both UG & PG students.
- Dean Research & Development (R&D) along with department R&D coordinators is taking responsibility of realistic implementation of institute ethics among faculty & student community through Anti plagiarism policy (APP) document in every aspect of academic & research writing. Dean Research & Development (R&D) helps departments to establish recognized research centers by coordinating with the . Dean R&D supervises

the research activity in institution by helping the faculty to apply for research projects/funding through AICTE, DST, UGC, DBT and other funding agencies meeting their deadlines every financial year.

- Dean Planning & Execution(P&E) is the custodian for all the immovable assets of the institution like the land, buildings, roads, drains, sewage, water supply system, electrical power system and other utilities. Dean P&E along with project office team takes care of the maintenance& documentation of institute assets and also ensures for cleanliness & green campus.
- Head of the department (HoD) along with his faculty& staff takes care of dynamic execution of all academic, research & student activities at ground level in the department as per the institute policy decisions approved by GB& AAC with transparency& accountability at each level of implementation.
- Administrative officer (AO) along with his establishment& accounts team plans for periodical meetings of Administrative Committee, Governing Body and Finance Committee and also monitors faculty& staff attendance& other financial matters under the supervision of principal.
- Senior faculty are actively involved as Professor/ Faculty in-charges for various Academic& student support centers include Entrepreneurship Development Centre(EDC), Industry Institute Interaction Cell (I³C), R&D cell, Industrial Consultancy Cell(ICC), Higher Education& Student Counseling (HESC) cell, Library Advisory committee (LAC), Alumni Affairs& External Relations (AA&ER), IQAC, Student activity center (SAC) clubs, Innovation & Incubation Centre (IIC), Centre of Excellences (CoEs), Professional students' bodies/chapters, College Management System (CMS),Campus Networking& Internet (CNI), Course Web (CW), Website Maintenance cell (WMC), Solar Power Plant Maintenance Cell (SPPC), SC/ST cell and SAHASRA Women cell. Faculty nominated in other statutory committees such as Grievance Redressal committee (GRC), Class review committee (CRC), Hostel committee, Anti ragging committee and Anti sexual harassment cell

			<p>helps administration to address student issues & grievances. Nomination of the faculty & students is purely based on the academic achievements and passion to work with interest & great enthusiasm in an efficient manner to execute all academic & student activities. Faculty & students nominated in various cells/ committees are responsible to ensure that the planning and activities are carried out by providing leadership and efficient management to achieve the institution's goals and objectives of developing students with skills that are holistic. Faculty & students are active participants to ensure that the scope defined for these committees are fulfilled and there is absolute harmony in the Institute. Every student activity enables them to address the needs of the industry irrespective of the challenges that they would face while on their profession/ entrepreneurship or any occupations they would pursue. Multiple functions assigned to the faculty & staff members has been in practice at the institute for decades and the best practices of various committees/ cells are reviewed periodically and systematic procedures are adopted & evaluated to ensure that the academic ecosystem is not disturbed on any day.</p>
	<ul style="list-style-type: none"> • Mechanism/Norms and Procedure for Democratic/Good Governance 	<p>MIET demonstrates a strong commitment to excellence in Institutional Mission and Purpose. The Academic Committee and the Governing Body set and support Goals for the Institution and also give the Strategic direction on planning and resourcing as well as setting the ethos and style of Institutional Practice. The Management periodically reviews on the Strengths and Weaknesses and the Willingness to improve. The determination is to strive for the highest standards of achievement.</p> <p>The Strategic Choices the Management of the Institute identified for its positioning are:</p> <ul style="list-style-type: none"> To become Global on Institutes Own Standing To Partner with Global Universities/ Institutes in search of Brand Name To maintain Unique identity by promoting Research and Innovation To become differentiator in the context of Pedagogic approach, Leadership in new frontiers. To support our Strategic Choices in achieving excellence we have been strengthening our 	

Academic Infrastructure on various functions of the Institute. The most important Areas are:

1. Regulation:

MIET at the outset complies with the Quality and Quantity of the AICTE, UGC and Affiliating University Guidelines while structuring the Education and Administrative Systems and at the same time keep its focus on Outputs and Development along side of Inputs and Control.

2. Governance:

The Institute practices Ethical standards, Openness and Transparency in the Governance and to implement these respective Committees, Councils, Centers and other such Advisory and Academic Committees have been established along with focus on other Areas of the Educational Model as stipulated by AICTE and UGC Guidelines. These include:

Involvement of Governing Body

Academic Council

Academic Advisory Committee

Board of Studies

Industry Institute Interaction Cell

Research and Development Cell

Entrepreneur Development Cell

Placement Cell

Student Mentoring & Career Guidance Cell

Finance Committee

Industrial Consultancy Cell

Alumni Affairs & External Relations Cell

Institute Data Centre

Educational Technology Cell

Internal Quality Assurance Cell

Higher Education & Student Counseling Cell

Website Support Cell

Course Web

College Management Software

Campus Networking and Internet

The most important corner stones of any educational set-up are the Faculty in terms of its

Adequacy, Composition, and Quality. MIET is comfortable in all the three dimensions. The Institute has the Core Faculty to teach the respective Subjects and there is no dependence on the outside visiting Faculty. Student to Faculty Ratio is in compliance to the Regulatory norms which is 1:15. We have a comfortable Faculty Structure in terms of Ph.D. to Non - Ph.D.

The Environment in the Institute is informal and experiential where Faculty is playing the role of Facilitators rather than Conventional Teachers as it is believed that that Student in such an environment are expected to learn more through reflection and assimilation of Ideas / Concepts and Application of

Theory to solving Real-Life issues than mere understanding of Tools and Techniques. Teachers in such a setting are expected to facilitate process of Learning compared to teaching what they intend to.

The Institute has been promoting collegial atmosphere expected in an Educational Institutions; Emotional Bondage between Teachers and Students is strong and the Teachers are considered as Mentors, Coaches and Counselors.

3. Content, Curriculum and Process of Delivery:

MIET with respect to Content and Curriculum is focused on What is taught and how it is taught. The importance of Content and Curriculum is at the highest Pedestal. The emphasis is on the three important

Components of the Content and Curriculum which are Quality, Relevance and Flexibility. The first two are an absolute necessity to ensure quality education; the last one is assuming importance in the emerging world where change has become ultimate reality. At MIET the Course Content integrates Innovation Incubation Research Entrepreneurship (I²RE) into course teaching.

4. Quality Parameters:

The Regulators primarily focus on Input aspects and that too Quantitative Parameters like number of Faculty and required quantum of Infrastructure. The Institute strictly and sincerely comply to these Guidelines and also lays emphasis on ensuring quality in developing the students holistically to become acceptable by the Industry and Society. The globally prevalent

mechanism of enhancing quality through self-regulation and accreditation which is the need of the hour is a practice at the Institute.

5. Faculty Development and Research:

Research & Development (R & D) Cell aims at motivating, monitoring and developing quality research in the institute. It is positively working on collaborative R& D projects and entering MoUs with industries. It also promotes creativity, research and innovation among the student community.

- To encourage research among the faculty, the institute has the facility of gaining study leave, reimbursing apart of the expenditure incurred in establishing the experimental set-ups for their research and deputing the faculty to national/international conferences with complete registration fee, TA & DA. A separate provision is also made in budget for R & D.
- **Industrial Consultancy Cell**
A full-fledged Industrial Consultancy Cell has been in existence to extend the consultancy services offered to various government and private organizations. The Cell aim sat building up better Industry-Institute interaction by expanding the consultancy network of the departments, providing a platform to train the undergraduate & postgraduate students to face the real field problems and transferring the technology from academicians to field personal and vice- versa. It has proposals to organize Seminars, Workshops and Training camps for practicing engineers to update their knowledge. Efforts are being made to provide quick and quality consultancy services as per standard norms and procedures. (**IQAC**)

The Internal Quality Assurance Cell (IQAC) of the institute records and monitors the quality measures of the institution. It also disseminates the information on quality aspects. It has a rich tradition of bringing out an Annual Report on institutional performance, consisting of the activities rolled out, achievements of faculty and students in terms of academic results, innovation, R& D, Publication, Workshops/ Seminars / Conferences, Training& Placement related information etc, in order to introspect the

organizational performance and for future strategic planning.

ALUMNI AFFAIRS & EXTERNAL RELATIONS (AA & ER) CELL

The Alumni of the institute are a matter of extreme pride to the institution and are key contributors to the development of the institute. In-service performance of our alumni is well appreciated by various national and multi-national corporate and some of them are rewarded by Govt. of India with President Awards. The office of Alumni Affairs & External Relations (AA & ER) strives to involve alumni as a stakeholder in the strategic planning for the institute and take their help in student mentoring, promote research & consultancy relationships between faculty & alumni.

[https://mandava.ac.in/wp-content/themes/twentytwentyone/assets/images/5.4.1 Alumni Association Certificate and Members Details.pdf](https://mandava.ac.in/wp-content/themes/twentytwentyone/assets/images/5.4.1%20Alumni%20Association%20Certificate%20and%20Members%20Details.pdf)

INDUSTRY INSTITUTE INTERACTION CELL (I3C)

The Industry Institute Interaction Cell (I3C) of the institute focuses on interacting with the industry to bridge the gap between the academia and industry. MIET, Jaggayyapeta has been honored with yet another distinction, in the form of institutional member of Confederation of Indian Industries (CII) under College Excellence cluster. Under this program, the faculty is trained in the industries and industrial visits and internships are facilitated for students. CII also organizes CEO speak sessions and guest lectures at institute, to enhance industry awareness among students & faculty. The other significant programs initiated by industry on campus include: Oracle - Development Program (Certification Training Program), TCS-Power Academy Program (Python Training Program), Govt. of Andhra Pradesh. (Mock Placement tests, Off-campus Placements, Training on Soft Skills, certification Programs).

Higher Education & Student Counseling Cell

Higher Education & Student Counseling Cell (HESC) is conceived with an objective of career guidance and student counseling for Higher Education in India or in Abroad. The major activities of the cell are

		<p>Collection and dissemination of information regarding PG programme in foreign and Indian universities.</p> <p>Students counseling and Career guidance or Higher Education Identification of the University/Institute both in India and Abroad Lending Books / Compact Discs related to Competitive exams like CAT, GATE, IES, GMAT, TOEFL, IELTS and GRE etc.</p> <p>Identifying the weaker students in each class and conducting extra classes for them to improve their performance.</p>
<p>Student feedback on institutional Governance/Faculty performance</p>		<p>Student counseling & Students' feedback is made as an integral part of education system at MIET for the benefit of student community. Faculty counselor is attached to 4 to 5 students (counselees) of each class/ section to help students to overcome the difficulties as part of his UG/ PG course of study. Student is given true freedom to interact with his faculty counselor at any time to express his/ her interest or personal problems (if any).</p> <p>Students' feedback on academic facilities provided and on course teacher performance is taken twice in semester, with a primary objective to utilize the students' feedback for improvement of academic teaching & learning resources and also to help the course faculty in identification of their strengths and weaknesses as part of their teaching and evaluation procedures.</p> <p>The Students' feedback from every class /year / section is taken in a very confidential manner through the Class review committee (CRC) meetings and through online feedback twice in semester. CRC consists of HoD, Senior faculty and student class representatives (CRs). The student CRs are nominated by the HoD to take a view from all the students from different profiles and normally consists of the Toppers in the class, Students with average marks and Students securing low marks, Students with good attendance.</p> <p>The Class review committee (CRC) that undertakes this process of faculty evaluation ensures for academic integrity, transparency & accountability. The students' CRC feedback is obtained through personal interaction/ meeting</p>

and also by questionnaire through online on all theory, practical / laboratory courses of respective semester.

Students are advised to share their experiences in confidence as their identity would be kept undisclosed. The CRC feedback is taken in detail on the parameters outlined below and the questionnaire is analyzed and further a Minutes of meeting (MoM) is prepared. The Parameters that are set forth before the student CRs/ students with regard to the faculty performance are:

- a) Organization and preparedness for the class
- b) Promptness in conducting classes
- c) Appropriate use of using different teaching aids (PPT, White Board etc.)
- d) Clarity in presentation
- e) Communication effectiveness
- f) Recommends additional learning resources (Books, Periodicals, Websites, Journals, Conferences etc.,)
- g) Provides timely feedback on Students' performance
- h) Creates comfortable learning environment for the students
- i) Encourages Extracurricular activities(SAC& Professional Activities etc.,)
- j) Helps and counsels on the subject and is available for after class consultations
- k) Interacts and encourages students to ask questions/active participation

Maintain discipline in the class

m)As a Role model Feedback assessment report made on strengths and weaknesses of the course teacher can be viewed by the course teacher for further improvement of his teaching & subject expertise based on the feedback. The course teachers, who have not performed well, will be given a wide opportunity to improve their skill sets and teaching methodologies by attending technical& teaching courses through FDPs/ STTPs/Workshops/ online SWAYAM MOOCs.

At MIET, the results of such CRC feedback

		assessment helped to:
		<p>(i) Determine whether the techniques adopted in teaching are having the desired impact on students learning</p> <p>(ii) Monitor whether the teaching Strategies meet course learning outcomes</p> <p>(iii) Identify challenges that students are having in learning the course material</p> <p>(iv) Improve instruction by transforming best teaching practices during the semester</p>
	<ul style="list-style-type: none"> Grievance Redressal mechanism for Faculty, Staff and Students 	<p>Grievance Redressal System is a vital part of any administration. It is the responsibility of the College Administration to provide a secure and contented environment to all its Staff and Students. The Grievance Redressal Committee has been formed in the College as per the UGC guidelines to redress the grievances of both the staff and the students. Since the inception of the college, the Committee has been under the direct purview of the Principal.</p> <p>The grievances received by the Principal are forwarded to the concerned Committee members who look in to the problems depending upon the seriousness of the issue.</p> <p>The Committee has been continuously striving to take the best efforts possible to create a harmonious and conducive atmosphere to everyone in question.</p> <p>The staff can email their grievances at grievance@mandava.ac.in.</p> <p>Functions of the Grievance Redressal Committee</p> <ul style="list-style-type: none"> To accept written grievances from students and staff related to the system. To create and implement a mechanism to handle the reported grievances. To forward the findings to the Management if necessary for further action. To listen, record and scrutinize the grievances submitted to them by the Staff and Students and take necessary steps immediately. To attend to the grievances based on the authenticity and gravity of the criticisms made. To represent the grievances to the concerned section which may include maintenance, transport, academic, amenities etc. To convene periodical meetings to discuss whether the grievances have been settled. To make a follow-up of these matters at regular intervals till their final disposal.

		To maintain strict confidentiality, if necessary.
	<ul style="list-style-type: none"> Establishment of Anti Ragging Committee 	Click Here
	<ul style="list-style-type: none"> Establishment of Online Grievance Redressal Mechanism 	https://mandava.ac.in/grievance/
6	Establishment of Internal Complaint Committee	
	Chairperson	Prof.Y B LAKSHMI ,Professor,Dept.of ECE yblakshmi@mandava.ac.in Mob.No: 8501050508
	Faculty Members(Min:2)	<ol style="list-style-type: none"> Mr S V D Prasad, Member , Dept. of ME svdprasad@mandava.ac.in Mob.No.9966432654 Mr Yarram Narasimha Rao, Mob.No.7330994686
	Non-Teaching staff(Min:2)	<ol style="list-style-type: none"> Smt.G Pramela prami.vasu@gmail.com Mob.No. 9032457992 Mr N Papa Rao Mob.No :9490392230
	Student Members (Min: 3) If matter involves students	<ol style="list-style-type: none"> Betukuri Karthik Department of CE, Bollepogu Suresh Department of CSE, Panchakarla Naga Pavan Department of ECE
	<ul style="list-style-type: none"> Establishment of Committee for SC/ST 	https://mandava.ac.in/wp-content/uploads/2026/04/5-MIET-SC-ST-Committee-Signed-2025-12-30.pdf
	<ul style="list-style-type: none"> Internal Quality Assurance Cell 	https://mandava.ac.in/wp-content/uploads/2025/01/IQAC_20241217191609.pdf
7	<ul style="list-style-type: none"> Name of Programmes approved by AICTE 	
	1	B.Tech- <i>Civil Engineering</i>
	2	B.Tech- <i>Mechanical Engineering</i>
	3	B.Tech- <i>Computer Science &Engineering</i>
	4	B.Tech- <i>Electrical and Electronics Engineering</i>
	5	B.Tech- <i>Electronics & Communication Engineering</i>
	6	B.Tech – <i>Computer Science and Engineering(Artificial Intelligence and Machine Learning)</i>
	7	M.Tech- <i>Structural Engineering</i>
	8	M.Tech- <i>Embedded System and VLSI</i>
	9	M.Tech- <i>Machine Design</i>
	10	M.Tech- <i>Computer Science &Engineering</i>

	11	Management	<i>Master of Business Administration</i>				
	12		<i>Integrated MBA</i>				
<ul style="list-style-type: none"> Programme wise Intake & Admitted Details during AY_2025-26 							
	Dept	Name of the Course	Level	Duration	Number of Seats	Number of Admissions	Fee
	CE	Civil Engineering	UG	4Years	60		40000/-
	ME	Mechanical Engineering			60		
	CSE	Computer Science & Engineering			60		
	EEE	Electrical and Electronics Engineering			30		
	ECE	Electronics & Communication Engineering			45		
	CSE	Computer Science and Engineering(AI&ML)			60		
	CE	Structural Engineering	PG	2Years	24		55000/-
	ME	Machine Design			12		
	CSE	Computer Science & Engineering			12		
	ECE	Embedded Systems & VLSI			12		
	MGMT	Master of Business Administration			120		44400/-
	MGMT	Integrated MBA			60		27000/-
<ul style="list-style-type: none"> Programme wise, Cutoff Ranks–General quota last year 							
	S.No.	Name of the Course			2025-26		
	1.	Civil Engineering			125331 - 177452		
	2.	Mechanical Engineering			113888 - 162341		
	3.	Computer Science & Engineering			105640 - 166990		
	4.	Electrical and Electronics Engineering			-----		
	5.	Electronics & Communication Engineering			86507 - 177536		
	6.	Computer Science & Engineering (Artificial Intelligence Machine Learning)			61989 - 173466		
	7.	Structural Engineering			-----		
	8.	Machine Design			-----		
	9.	Computer Science & Engineering			-----		

	10.	Embedded Systems & VLSI		-----			
	11.	Master of Business Administration		4183 -36903			
	12.	Integrated MBA		-----			
	<ul style="list-style-type: none"> • Programme wise, Placement Details last three years 						
	<ul style="list-style-type: none"> • Placement Facilities 			View			
	<ul style="list-style-type: none"> • Whether the Collaboration Programme is approved by AICTE? If not whether the Domestic/Foreign University has applied to AICTE for approval 			No			
8	<ul style="list-style-type: none"> • Faculty Details 						
S. No	Title	First Name	Last Name	Designation	Appointment Type	Department	Highest Degree
1	Dr.	VENUGOPALA RAO	THADEPALLI	Professor	Regular	Civil Engineering	Ph.D
2	Mrs.	SUJATHA	BURRI	Associate Professor	Regular	Civil Engineering	M.TECH
3	Mrs.	GULLAPALLI	PHANI LAKSHMI	Assistant Professor	Regular	Civil Engineering	M.TECH
4	Mr.	SANDEEP	VISWANADHAPALLI	Assistant Professor	Regular	Civil Engineering	M.TECH
5	Mr.	BHUKYA	KRISHNA	Assistant Professor	Regular	Civil Engineering	M.TECH
6	Mrs.	SWETHA	MUNNANGI	Associate Professor	Regular	Civil Engineering	M.TECH
7	Mr.	MANIKANTA	KETHAVARAPU	Assistant Professor	Regular	Civil Engineering	M.TECH
8	Mr.	VENKATESWARLU	KADARI	Associate Professor	Regular	Civil Engineering	M.TECH
9	Ms.	SURENDRA	TANNIRU	Assistant Professor	Regular	Civil Engineering	M.TECH
10	Mr.	GOVINDARAO	KAMBAPATI	Associate Professor	Regular	Civil Engineering	M.TECH
11	Mr.	RAJESH	AYALAPOGU	Associate Professor	Regular	Civil Engineering	M.TECH
12	Mr.	JAGADEESH	KUMAR JANAPATI	Assistant Professor	Regular	Civil Engineering	M.TECH
13	Mr.	NARENDRA	DUGGIRALA	Assistant Professor	Regular	Civil Engineering	M.TECH
14	Mr.	VENKATESWARLU	PAPANABOINA	Assistant Professor	Regular	Civil Engineering	M.TECH
15	Mr.	NAVEEN	MUTYALA	Assistant Professor	Regular	Civil Engineering	M.TECH
16	Mrs.	PRASUNA	KAIPU	Assistant Professor	Regular	Civil Engineering	M.TECH
17	Mr.	MEGHA SYAM	CHINTALAPUDI	Associate Professor	Regular	Civil Engineering	M.SC-CHEM
18	Dr	CHITTIBABU	BANOTH	Associate Professor	Regular	Civil Engineering	PH.D
19	Dr.	GANESHBABU	KOLISETTY	Professor	Regular	Civil Engineering	PH.D
20	Mr.	DEEPA	KUCHIPUDI	Assistant Professor	Regular	Civil Engineering	M.SC-MATHS

21	Mrs.	PAVANI	NARRAN	Assistant Professor	Regular	Civil Engineering	MSC-PHYS
22	Mrs.	MYLARISHETTY	NIRMALA	Assistant Professor	Regular	Civil Engineering	M.SC-MATHS
23	Dr.	THALADA	SURYANARAYANA	Associate Professor	Regular	Civil Engineering	PH.D
24	Mr.	JWALA PAVANKUMAR	NAIK BHUKYA	Assistant Professor	Regular	Mechanical Engineering	M.TECH
25	Mr.	SASIDHAR	KANTHETI	Professor	Regular	Mechanical Engineering	PH.D
26	Mr.	RADHA KRISHNA	ADIRAJU	Assistant Professor	Regular	Mechanical Engineering	M.TECH
27	Mr.	KISHORE KUMAR	CHINTHA	Assistant Professor	Regular	Mechanical Engineering	M.TECH
28	Ms.	VENKATESH	YADLA	Assistant Professor	Regular	Mechanical Engineering	M.TECH
29	Mrs.	CHINTHALA	VINODA	Assistant Professor	Regular	Mechanical Engineering	MBA
30	Mr.	RAJASEKHARA REDDY	SARIPALLI	Assistant Professor	Regular	Mechanical Engineering	M.TECH
31	Mr.	MADHUKAR	VELLANKI	Assistant Professor	Regular	Mechanical Engineering	M.TECH
32	Ms.	ANURADHADEVI	ANANTHAVARAPU	Assistant Professor	Regular	Mechanical Engineering	MSC-PHYS
33	Mrs.	MRS.JYOSTNA	MANDAPALLI	Assistant Professor	Regular	Mechanical Engineering	M.TECH
34	Mr.	PRADEEP	TALARI	Associate Professor	Regular	Mechanical Engineering	M.TECH
35	Mrs.	POTULA	RAMADEVI	Associate Professor	Regular	Mechanical Engineering	M.TECH
36	Mr.	ANANTH NAG	REGANDLA	Associate Professor	Regular	Mechanical Engineering	M.TECH
37	Mr.	UMAKANTH	AMIRINENI	Assistant Professor	Regular	Mechanical Engineering	M.TECH
38	Mr.	SUBBA RAO	PARA	Associate Professor	Regular	Mechanical Engineering	M.TECH
39	Mrs.	KUSUMA KUMARI	DAMACHRAL	Associate Professor	Regular	Mechanical Engineering	M.TECH
40	Mr.	RAMAKRISHNA	BALEGHAT	Assistant Professor	Regular	Mechanical Engineering	M.TECH
41	Mr.	PUNEETH	CHILUKOTI	Assistant Professor	Regular	Mechanical Engineering	M.TECH
42	Mr.	VENKATA DURGA	SOMAVARAPU	Associate Professor	Regular	Mechanical Engineering	M.TECH
43	Mr.	SAIDA	BHUKYA	Assistant Professor	Regular	Mechanical Engineering	M.TECH
44	Mr.	BHASKARARAO	THOTA	Assistant Professor	Regular	Mechanical Engineering	M.TECH
45	Mr.	MOHAMMAD	FATHE	Associate professor	Regular	Mechanical Engineering	M.TECH
46	Dr.	PRUDHVI KRISHNA	AMBURI	Assistant Professor	Regular	Mechanical Engineering	PHD
47	Mr.	AVINASH	KODATI	Lecturer	Regular	Mechanical Engineering	M.TECH
48	Mr.	KAPIL DEV	DOVARI	Lecturer	Regular	Mechanical Engineering	M.TECH

49	Mrs.	GANTELA	ARUNA	Assistant Professor	Regular	Mechanical Engineering	M.SC-CHEM
50	Mr.	CHANDRA SEKHAR	KAKANI	Assistant Professor	Regular	Mechanical Engineering	M.TECH
51	Mr.	SRINIVASULU	GORANTLA	Professor	Regular	Mechanical Engineering	M.TECH
52	Mrs.	ANCHA	SREELAXMI	Associate Professor	Regular	Mechanical Engineering	M.TECH
53	Mr.	RAVINDRA PRASAD	GUNDALA	Assistant Professor	Regular	Computer Science & Engineering	M.TECH
54	Mr.	NAGA VENKATA DIWAKAR	KOMARA	Assistant Professor	Regular	Computer Science & Engineering	M.TECH
55	Ms.	MEKALA	MOUNICA	Lecturer	Regular	Computer Science & Engineering	B.TECH
56	Mr.	ALETI RAVI	KUMAR	Assistant Professor	Regular	Computer Science & Engineering	B.TECH
57	Ms.	VENKATA NAGALAKSHMI	GOTIKA	Assistant Professor	Regular	Computer Science & Engineering	MCA
58	Mr.	PAVANI	NALLANAGULA	Assistant Professor	Regular	Computer Science & Engineering	MSC-PHYS
59	Mr.	VINAYAKUDU	INAPANURTHI	Associate Professor	Regular	Computer Science & Engineering	M.TECH
60	Mr.	GERA	RAMESH	Assistant Professor	Regular	Computer Science & Engineering	M.TECH
61	Mr.	PRABHAKARA	TOTA	Associate Professor	Regular	Computer Science & Engineering	M.TECH
62	Mr.	SRINIVASA RAO	KATTA	Associate Professor	Regular	Computer Science & Engineering	M.TECH
63	Mrs.	MARRIBOINA	BHAVANI	Assistant Professor	Regular	Computer Science & Engineering	M.SC-CHEM
64	Mr.	PAUL SUNDAR	MUGGALLA	Assistant Professor	Regular	Computer Science & Engineering	M.TECH
65	Mr.	BHARATH	GUNDU	Assistant Professor	Regular	Computer Science & Engineering	M.TECH
66	Mrs.	BHAVYA	ORUGANTI	Assistant Professor	Regular	Computer Science & Engineering	M.TECH
67	Mr.	RAGHAVENDRA	TAMMAVARAPU	Assistant Professor	Regular	Computer Science & Engineering	M.TECH
68	Mr.	NARESH	GOTTUMUKKALA	Asst Professor	Regular	Master of Business Administration	MBA
69	Ms.	BINDU	THIMMASARTHI	Associate Professor	Regular	Master of Business Administration	MBA
70	Mr.	BHIMAVARAPU	SWAMY	Asst Professor	Regular	Master of Business Administration	MBA
71	Mr.	ASHOK KUMAR	CHINTHA	Asst Professor	Regular	Master of Business Administration	MBA
72	Mr.	SANGEPU	GOPALARAO	Asst Professor	Regular	Master of Business Administration	MBA
73	Mr	YARRAM	SATEESH	Asst Professor	Regular	Master of Business Administration	MBA
74	Mr.	VENUGOPAL	NALAJALA	Asst Professor	Regular	Master of Business Administration	MBA
75	Mr.	GOPI	VEMANA	Asst Professor	Regular	Master of Business Administration	MBA
76	Ms.	AMBOJI	SPANDANA	Asst Professor	Regular	Master of Business Administration	MBA

77	Mr.	RAJASEKHAR	MANDAVA	Asst Professor	Regular	Master of Business Administration	MBA
78	Mr.	VIJAYA KUMAR	KURAGANTI	Associate Professor	Regular	Master of Business Administration	MBA
79	Mr.	HARIBABU	VUYYALA	Asst Professor	Regular	Master of Business Administration	MBA
80	Mr.	NAGARAJU	BALU	Asst Professor	Regular	Master of Business Administration	MBA
81	Mr.	NAGARAJU	LIKKI	Asst Professor	Regular	Master of Business Administration	MBA
82	Mr.	SANDEEP	KOMMINENI	Asst Professor	Regular	Master of Business Administration	MBA
83	Ms.	SAI TEJASWANI	CHERUKUMALLA	Asst Professor	Regular	Master of Business Administration	MBA
84	Mr.	REVANTH	CHERUKUMALLA	Asst Professor	Regular	Master of Business Administration	MBA
85	Ms.	ARUNA	NALABOTHUL	Asst Professor	Regular	Master of Business Administration	MBA
86	Mr.	RAMESH	BADAVATHU	Asst Professor	Regular	Master of Business Administration	MBA
87	Mr.	VIJAY KUMAR	MARAM	Asst Professor	Regular	Master of Business Administration	MBA
88	Mr.	VENKATESWARAR AO	SIRIGIRI	Asst Professor	Regular	Master of Business Administration	MBA
89	Ms.	UMADEVI	PEDDI	Associate Professor	Regular	Master of Business Administration	MBA
90	Ms.	SOMESWARAMMA	BALABOLU	Asst Professor	Regular	Master of Business Administration	MBA
91	Mr.	KIRAN	VEGGALAM	Associate Professor	Regular	Master of Business Administration	MBA
92	Mr.	GOVARDHANA	JONNALAGADDA	Associate Professor	Regular	Master of Business Administration	MBA
93	Mr.	EDUKONDALU	DHARAVATHU	Asst Professor	Regular	Master of Business Administration	MBA
94	Mr.	NAGESH	BUDDI	Asst Professor	Regular	Master of Business Administration	MBA
95	Mr.	VENKATA SUMAN	SANKA	Asst Professor	Regular	Master of Business Administration	MBA
96	Ms.	NIRMALA	HARIKA	Asst Professor	Regular	Master of Business Administration	MBA
97	Ms.	PAGADALA	NIHARIKA	Asst Professor	Regular	Master of Business Administration	MBA
98	Ms.	MADHAVI	CHINTHALA	Asst Professor	Regular	Master of Business Administration	MBA
99	Ms.	PENTELE	UMARANI	Asst Professor	Regular	Master of Business Administration	MBA
100	Ms.	VADLAMUDI	DEEPTHI	Asst Professor	Regular	Master of Business Administration	MBA
101	Mr.	MASTANVALI	SHAIK	Asst Professor	Regular	Master of Business Administration	MBA
102	Mr.	NAGESWARA	NAMBURI	Associate Professor	Regular	Master of Business Administration	MBA
103	Mr.	RAMBABU	BHIMALA	Asst Professor	Regular	Artificial Intelligence & Machine Learning	M.TECH
104	Mr.	VEERANJANEYULU	PIDIMARTHY	Asst Professor	Regular	Artificial Intelligence & Machine Learning	M.TECH

105	Mr.	BANOTH	NARASIMHA RAO	Asst Professor	Regular	Artificial Intelligence & Machine Learning	M.TECH
106	Ms.	NUTHALAPATI	MOUNIKA	Asst Professor	Regular	Artificial Intelligence & Machine Learning	M.TECH
107	Mr.	RAMBABU	DAMMA	Associate Professor	Regular	Artificial Intelligence & Machine Learning	M.SC (CHEMISTRY)
108	Mr.	VENKATAVIJAYARAMA MOHANA RAO	TATINENI	Associate Professor	Regular	Artificial Intelligence & Machine Learning	M.SC (MATHS)
109	Mrs.	NAGA RANI	GANTELA	Asst Professor	Regular	Artificial Intelligence & Machine Learning	M.A (ENGLISH)
110	Ms.	LAKSHMI TIRUPATHAMMA	JIDUGU	Lecturer	Regular	Electronics & Communication Engineering	M.TECH
111	Ms.	SIREESHA	GINJUPALLI	Lecturer	Regular	Electronics & Communication Engineering	M.TECH
112	Mr.	VENKATESH	GADARA	Lecturer	Regular	Electronics & Communication Engineering	M.TECH
113	Ms.	THIPPIREDDY	HEMALA	Asst Professor	Regular	Electronics & Communication Engineering	M.TECH
114	Ms.	VELISETTI	HARITHA	Asst Professor	Regular	Electronics & Communication Engineering	M.TECH
115	Mr.	VENKATA KRISHNA RAO	BATHULA	Associate Professor	Regular	Electronics & Communication Engineering	M.SC-MATHS
116	Mrs.	SUSEELA	MOTHUKURI	Asst Professor	Regular	Electronics & Communication Engineering	M.TECH
117	Mr.	RAJU	THOTA	Lecturer	Regular	Electronics & Communication Engineering	M.TECH
118	Mr.	VEERABABU		Asst Professor	Regular	Electronics & Communication Engineering	M.TECH
119	Ms.	MADHAVI	GENTELE	Asst Professor	Regular	Electronics & Communication Engineering	M.TECH
120	Ms.	APARNA	MUSULURI	Asst Professor	Regular	Electronics & Communication Engineering	M.TECH
121	Ms.	ANUMOLU	BHANUPRIYA	Asst Professor	Regular	Electronics & Communication Engineering	M.TECH
122	Ms.	DONTHAMSETTI	DURGA BHAVANI	Asst Professor	Regular	Electronics & Communication Engineering	M.TECH
123	Mr.	GOPALARAO	GERA	Associate Professor	Regular	Electronics & Communication Engineering	M.TECH
124	Ms.	MARKAPUDI	NAVYA	Asst Professor	Regular	Electronics & Communication Engineering	M.TECH
125	Mr.	NAGARJUN SINGH	BONDILI	Associate Professor	Regular	Electronics & Communication Engineering	M.TECH
126	Dr.	DR. SYAM	BADDETI	Principal/Director	Regular	Electronics & Communication Engineering	PH.D

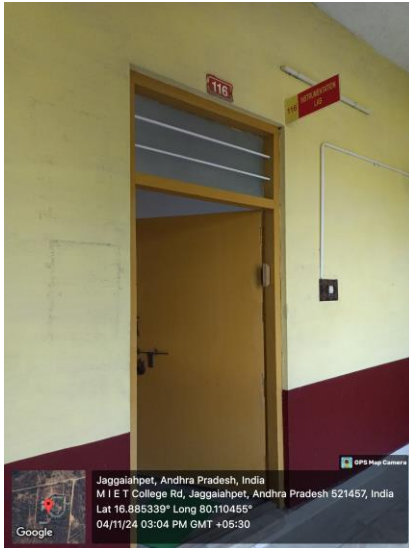
127	Mr.	SUBHAKARA RAO	BHUKYA	Associate Professor	Regular	Electronics & Communication Engineering	M.TECH
128	Mr.	TAJUDDIN	SAYYAD	Asst Professor	Regular	Electrical & Electronics Engineering	M.TECH
129	Mrs.	LAKSHMI	DAMACHARLA	Asst Professor	Regular	Electrical & Electronics Engineering	B.TECH
130	Mr.	KRISHNA	LAVUDIYA	Asst Professor	Regular	Electrical & Electronics Engineering	M.TECH
131	Mr.	CHANDRASEKHAR	CHANDURI	Asst Professor	Regular	Electrical & Electronics Engineering	M.TECH
132	Ms.	CHANDANA	TEJOVATHU	Asst Professor	Regular	Electrical & Electronics Engineering	M.TECH
133	Ms.	MALLADI	RAJYA LAKSHMI	Associate Professor	Regular	Electrical & Electronics Engineering	M.SC-CHEM
134	Mr.	RAMESH	KANDULA	Asst Professor	Regular	Electrical & Electronics Engineering	M.TECH
135	Mr.	CHAKRAPANI	KAKANI	Asst Professor	Regular	Electrical & Electronics Engineering	M.TECH
136	Ms.	DURGA DEVI	KORRA	Asst Professor	Regular	Electrical & Electronics Engineering	M.TECH
137	Ms.	BHARGAVI	KASTURI	Asst Professor	Regular	Electrical & Electronics Engineering	M.TECH

9	FEE						
	Fee Particulars	B.Tech	M.Tech.	MBA			
	Details of fee as approved by State Fee Committee, for the Institution	Rs.40,000/-per annum (from 2023-24 AY)	Rs.55,000/per annum (from 2023-24AY)	Rs.44400/per annum (from 2023-24 AY)			
	Time Schedule for payment of fee for the entire program	Full fee at the beginning of Academic Year	50%-I Semester 50%-II Semester	Full fee at the beginning of Academic Year			
	No of Fee waivers granted with amount and name of students	100%					
	Number of Scholarship offered by the Institution, duration and amount	Click link : https://mandava.ac.in/criteria-5/					
	Criteria for fee waivers / Scholarship						
	Estimated cost of Boarding and Lodging in Hostels	Rs.45,000/-per annum					

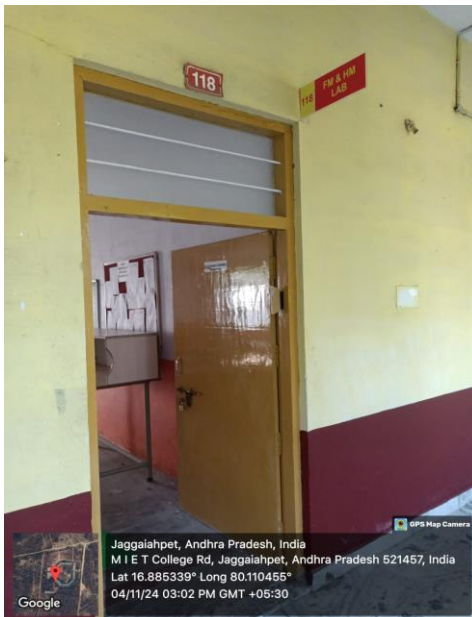
10	<ul style="list-style-type: none"> Admission 	
	Number of seats sanctioned with the year of approval	Click Here
	Number of students admitted under various categories each year in the last three years	
11	Admission Procedure	As notified by the Govt.of AP
	Particulars	Details
	Mention the admission test being followed, name and address of the Test Agency and its URI. (Website)	<p>AP EAPCET(Andhra Pradesh Engineering Agricultural and Pharmacy Common Entrance Test), AP PGE CET (Andhra Pradesh Post Graduate Engineering Common Entrance Test)& AP ICET (Andhra Pradesh Integrated Common Entrance Test)</p> <p>Andhra Pradesh State Council of Higher Education, NEELADRI TOWERS, 6TH BATTALIAN ROAD, Mangalagiri, Andhra Pradesh 522503</p> <p>Links:</p> <p>AP EAPCET: https://eapcetsche.aptonline.in/EAPCET/</p> <p>AP PGE CET : https://pgecetsche.aptonline.in/PGE CET/Views/index.aspx</p> <p>AP ICET : https://icetsche.aptonline.in/ICET/Views/index.aspx</p>
	Number of seats allotted to different Test Qualified candidate separately (AIEEE / CET (State conducted test / University tests / CMAT /GPAT) / Association Conducted test)	<p>70% of the intake capacity, the seats is allotted to the students who have qualified in the state entrance examination AP EAMCET,</p> <p>AP ECET, AP PGE CT& AP ICET conducted by Higher Education Department of Andhra Pradesh State Government based on the entrance merit rank.</p> <p>10%EWS 30%oftheseatsarefilledbythemanagement.</p>

	<p>The waiting list shall be activated only on the expiry of date of main list</p>	<p>The Admissions are done based on the Criteria of Merit. The Process involves release of Advertisement calling for Applications with required Documents, Verification of Documents and Admission confirmed based on Merit and Scrutiny of the Documents and placed on the Website of the Institute. In all there will be two Lists of Admitted Students and each time the due process of verification is done and up loaded. After the second List, the available Seats will again be advertised for Spot Admission on a First come First Admitted basis and if there is Competition again Merit will be the basis for confirmation of Admission.</p> <p>After Admission the final List will be uploaded on the Web site and the same submitted to the Andhra Pradesh State Higher Education Council (AP SCHE) for approval and records.</p> <p>APSCHE will then give us the approved list along with the Students admitted through State Counseling for the 70% of State Quota.</p>
	<p>The policy of refund of the fee, in case of withdrawal, Shall be clearly notified</p>	<p>As per the rules and regulations of AICTE and Andhra Pradesh State Higher Education Council (AP SCHE)</p>
12 Results of Admission Under Management seats/Vacant Seats		
	<p>Composition of selection team for admission under Management Quota with the brief profile of members (This information be made available in the public domain after the admission process is over)</p>	<p>As per APSCHE Guidelines</p> <p>https://cets.apsche.ap.gov.in/APSCHE/APSCHESPOT/APSCHEHome_Spot.aspx</p>
	<p>Score of the individual candidate admitted Arranged in order or merit</p>	
	<p>List of candidate who have Been offered admission</p>	
13 List of Applicants		
	<p>Waiting list of the candidate in order of merit to be operative from the last date of joining of the First list candidate</p>	<p>As per APSCHE Guidelines</p>
	<p>List of the candidate who joined within the date, vacancy position in each category before operation of waiting list</p>	<p>https://cets.apsche.ap.gov.in/APSCHE/APSCHESPOT/APSCHEHome_Spot.aspx</p>

INSTRUMENTATION LAB



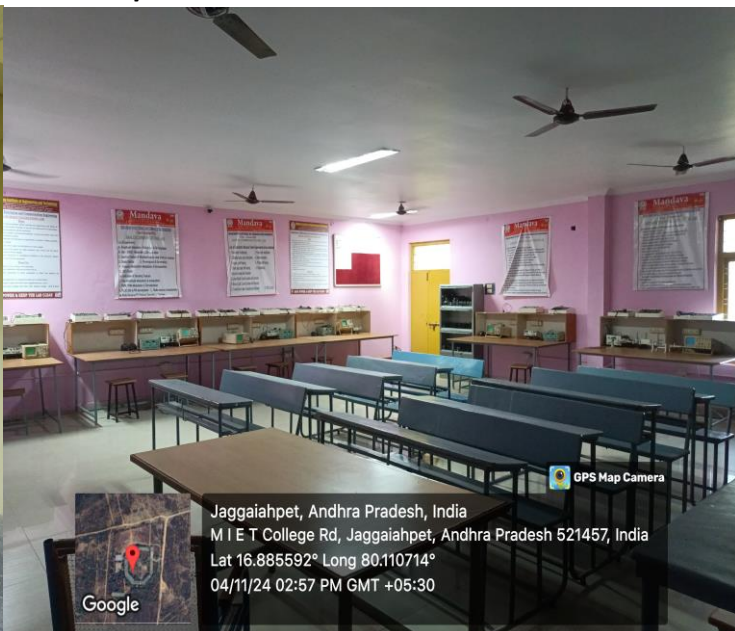
FM LAB



SM LAB



ANALOG COMMUNICATION LAB / DIGITAL COMMUNICATION LAB STLD LAB/MWSC LAB



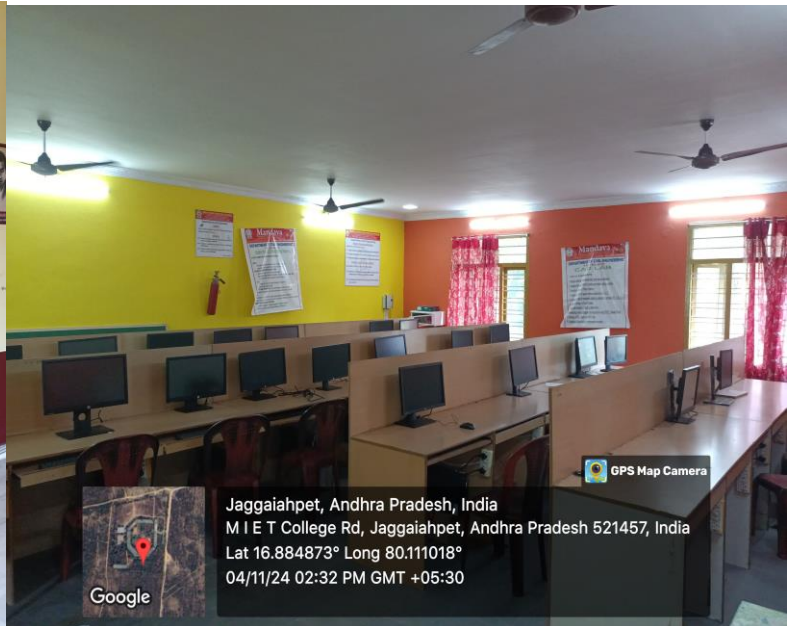
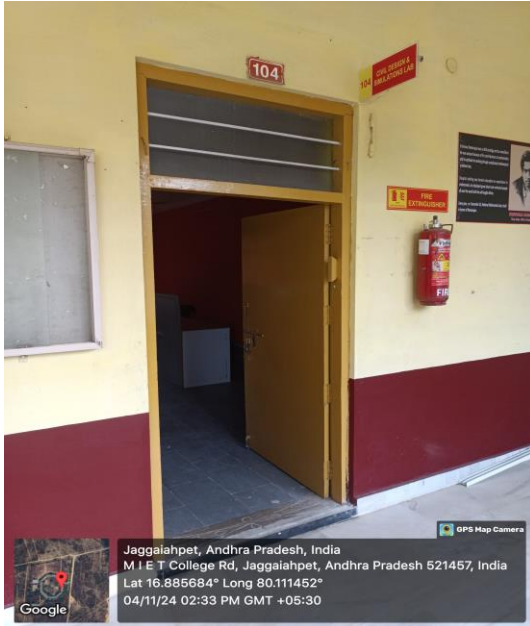
ELECTRICAL MACHINES LAB-1&2



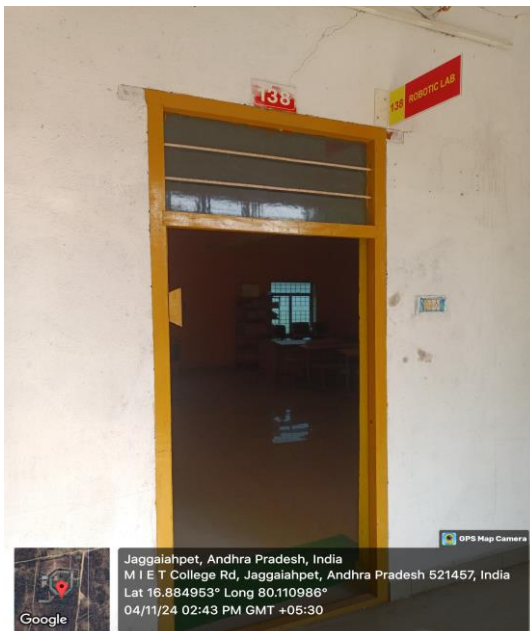
MECHANICAL SIMULATIONS LAB



Civil Design & Simulations LAB



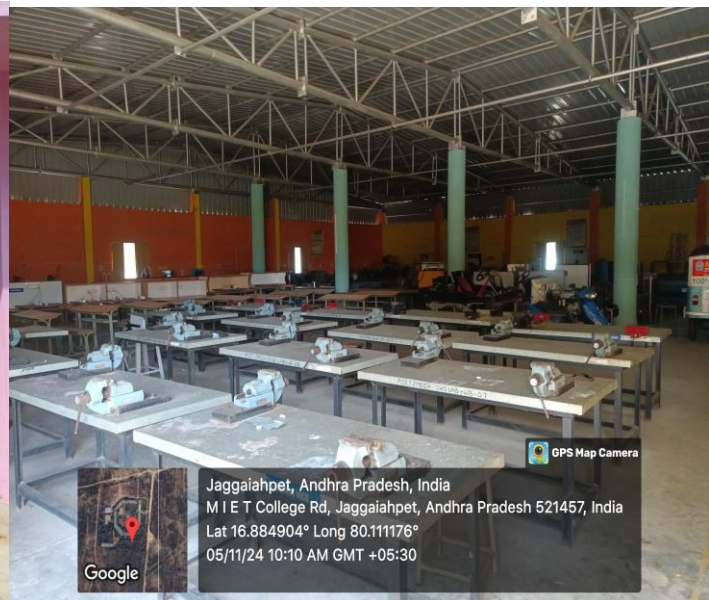
Robotic Lab



SURVEYING & EG LAB



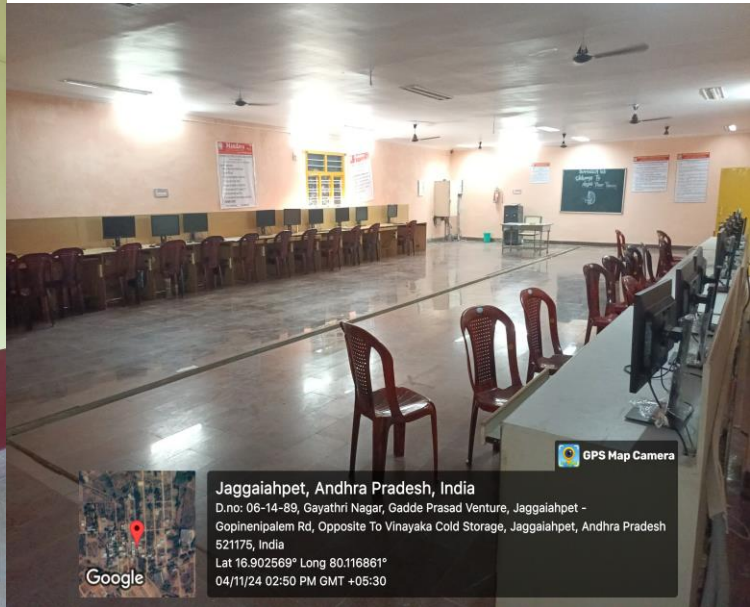
ENGINEERING WORKSHOP LAB



GTE & TE LAB



MICRO PROCESSORS/DSPLAB/DICD Lab





LH01-LECTURE HALL ENTRANCE



LH01-LECTURE HALL INNER



LH02-LECTURE HALL ENTRANCE



LH02-LECTURE HALL INNER

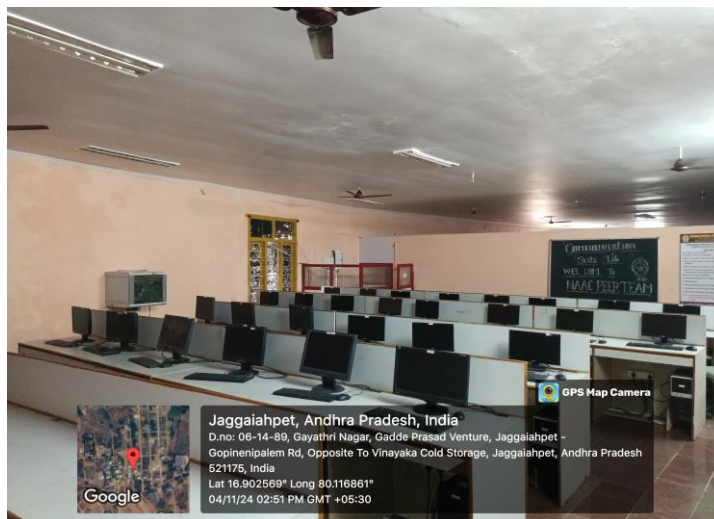


LH03-LECTURE HALL ENTRANCE



LH03-LECTURE HALL INNER

LANGUAGE LABORATORY



Library			
	Name of the Program	No. of Titles	No. of Volumes
	Total UG&PG Programmes	4979	23064
<p>❖ List of online National/International Journals subscribed</p> <p>a. Print National/International Journals : 89</p> <p>b. Online Journals :1550</p>			
	E-Library facilities	<p>DIGITAL LIBRARY: The digital library has campus LAN connectivity through computer centre an disconnected to web server. 15 Computers are installed for browsing. The Institution has subscription of AICTE recommended E-Journals package with which we can access E-Journals & E-Books of ASCE, ASME, ELSEVIER-Science Direct, IEEE, Springer Links, J-GATE(S&MS) NDL& N-LIST.</p> <p style="text-align: center;">SeatingCapacity:15</p> <p>HP Desktop 466-012iL Intel Corei3-4170 Intel Chipset 4GB RAM , 1TB Hard Disk ATX Cabinate Key Board, Optical Mouse and 18.5 ‘LEDHP Monitor, 2 TB +4 TB +4 TB Hard Disk(External). 10TB HD and DLP Projector & Screen</p>	
Computing Facilities			
	Internet Bandwidth	400 Mbps	
	Number and configuration of System	444(Intel Core to Duo, Corei3,Corei5 Systems)	
	Total number of system connected by LAN	444	
	Total number of system connect by WAN	444	
	Major software packages available	<p>YES, Microsoft 365A3 for faculty.</p> <p>Application Software’s: MATLAB Campus Wide License</p>	

Special purpose facilities available		
Innovation Cell	<p><i>Innovation Cell</i> <i>(Institution's Innovation Council)</i></p> <ol style="list-style-type: none"> 1. Incubation Centre(DiscussionRoom-1&2). 2. Incubation Centre Pitching Hall. <p>The institute has a full-fledged Innovation Incubation Center and it is able to provide innovative environment to our young budding engineers. By organizing various events good number of innovative ideas, are invited, that have potential to be incubated and turn them out into business opportunities.</p> <p>The institute is granted with 'Institution's Innovation Council (IICs)' by Ministry of Human Resource Development (MHRD), Govt. of India. It has established 'MHRD's Innovation Cell (MIC)' to systematically foster the culture of Innovation amongst all Higher Education Institutions (HEIs). The primary mandate of MIC is to encourage, inspire and nurture young students by supporting them</p> <p>to work with new ideas and transform them into prototypes while they are informative years. A network of these IICs was established to promote innovation in the Institution through multitudinous modes leading to an innovation promotion eco-system in the campuses.</p> <p>Major focus of IIC</p> <ol style="list-style-type: none"> 1. To create a vibrant local innovation ecosystem. 2. Start-up supporting Mechanism in HEIs. 3. Prepare institute for Atal Ranking of Institutions on Innovation Achievements Framework. 4. Establish Function Ecosystem for Scouting Ideas and Pre-incubation of Ideas. 5. Develop better Cognitive Ability for Technology Students. 	
Compliance of the National Academic Depository (NAD), applicable to PGCM/ PGDM Institutions and University Departments	---	
<ul style="list-style-type: none"> List of facilities available 		
Games and Sports Facilities	Click Here	
Extra-Curricular Activities	Click Here	
Soft Skill Development Facilities	Separate Skills Lab is facilitated with Computer LCD Projector ,Mike set and other Audio devices	
<ul style="list-style-type: none"> Teaching and Learning Process 		
Curriculum and Syllabus for each of the programmes as approved by	B.Tech.(CE)	Click Here
	B.Tech.(ME)	Click Here

	the University	B.Tech.(ECE)	Click Here
		B.Tech.(CSE)	Click Here
		B.Tech.(EEE)	Click Here
		B.Tech. (CSE-AI&ML)	Click Here
	Academic Calendar of the Institute	Click Here	
	Academic Time Table with the name of The Faculty members handling the Course	Click Here	
	Internal Continuous Evaluation System And place	As JNTUK Academic Regulations	
	Student's assessment of Faculty, System in place	https://mandava.ac.in/wp-content/themes/twentytwentyone/mandava/Feedback/main.html	
	<ul style="list-style-type: none"> For each Post Graduate Courses give the following 		
	Curriculum and Syllabus	M.Tech.(SE&C)	Click Here
		M.Tech. (ME)	Click Here
		M.Tech.(CSE)	Click Here
		M.Tech.(ES&VLSI)	Click Here
		MBA	Click Here
		Integrated MBA	Click Here
	Special Purpose		
	Software, all design tools in case		
	Academic Calendar and frame work		
16	Enrolment of Students in the last 3 years	Click Here	
17	List of Research Projects / Consultancy Works		
	Number of Projects carried out, funding agency, Grant received	Click Here	
	Publications (if any) out of research in last three years out of masters projects	Click Here	
	Industry Linkage	Click Here	
	MoUs with Industries(Minimum3)	Click Here	
	<p>Faculty and students encouraged to visit industries for field studies. Departments are encouraged to make their courses of study relevant to industry. Industrial visits, lectures by industry experts and domain experts are regularly conducted. To have better Industry Academia interface, the institute has been pursuing periodically on the needs of industry and the curriculum. Civil Engineering Board of Studies is having Industry representation and their involvement in the program design. To have an industry interaction the department is strengthen by the following organizations IGBC, ICI, ISTE and IEI.</p>		

	The institution has signed MoU's with Confederation of Indian Industry (CII), LEED, KSN Engineers, KPCL, Grafix, Infomile	
18	LoA and subsequent EoA till the current Academic Year	https://mandava.ac.in/aict-e-approval/
19	Accounted audited statement for the last three years	Click Here
20	Best Practices adopted, if any	http://mandava.ac.in/bestpractice