



ESTD:2007

MANDAVA INSTITUTE OF ENGINEERING AND ECHNOLOGY

(Sponsored by Sri Siva Kameswari Educational Society)

Approved by AICTE, New Delhi, Affiliated to JNTU Kakinada

Vidya Nagar, JAGGAIHPET-521175, Krishna Dist., A.P., INDIA



10.0 Mandatory Disclosure		
1	Name of the Institution	MANDAVA INSITUTE OF ENGINEERING AND TECHNOLOGY
	Address of the Institution	Vidya Nagar, NTR District, JAGGAIHPETA, Andhra Pradesh, Pin: 521175
	Phone number with STD code	08654-226768
	Mobile Number	9121214607
	Email	ff.principal@jntuk.ac.in
2	Name of the Society	SRI SIVAKAMESWARI EDUCATIONAL SOCIETY
	Address of the Society	#396/2AH, Vidya Nagar, NTR District, JAGGAIHPETA, Andhra Pradesh, Pin: 521175
	Phone number with STD code	8008326868
	Mobile Number	8688326868
	Email	mietenggcollege@gmail.com
3	Name of the Principal	Dr. Baddeti Syam
	Address of the Principal	Vidya Nagar, NTR District, JAGGAIHPETA, Andhra Pradesh, Pin: 521175
	Phone number with STD code	08654-226768
	Mobile Number	9121214607
	Email	ff.principal@jntuk.ac.in
4	Name of the Affiliating University	JNTUK, KAKINADA
5	Governance	
• Members of Administrative Committee		
	Sri Mandava Sujatha Chairman	Chairman-SSKE
	Mr. Mandava Sridhar Secretary	Secretary-SSKE

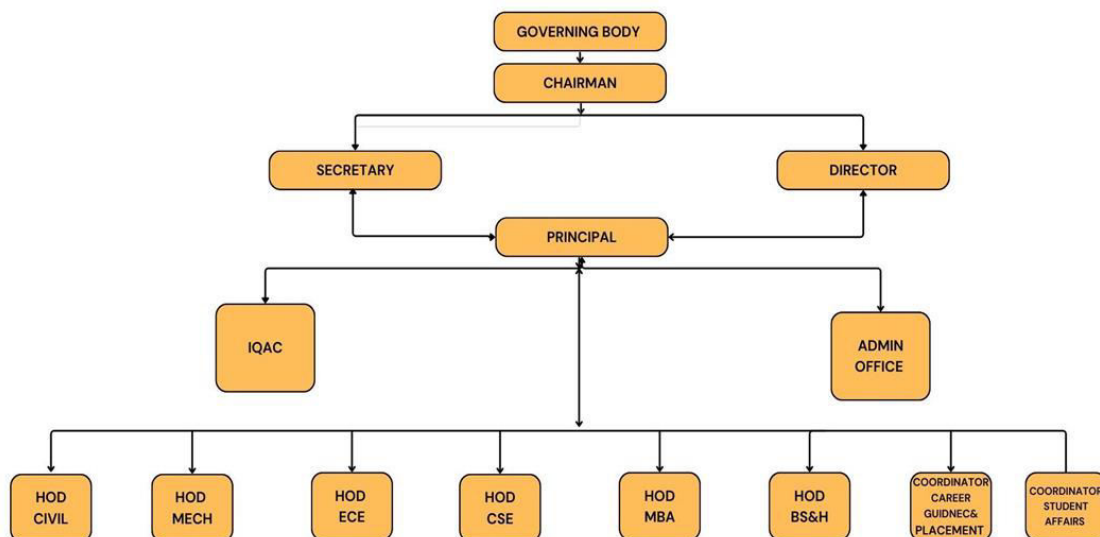
	Mrs. Mandava Kusuma Kumari Treasurer	Treasurer-SSKE
	Mr. Vasireddy Manoj, Member	Managing Director, Resins & Allied Products DRDO & ISRO based MSME
	Mrs. Moothukuri Suseela Member	HOD, Dept. of ECE
	Mr. Fateh Mohammad Member	Associate Professor, Dept of ME
	Mr. Buddi Nagesh Member	Accounts Officer
	Dr. Banavathu Balakrishna Member	Professor JNTUK
	State Govt. Nominee Member	State Govt. Nominee
	Mrs. Damacharla Prasanna Member	Member-SSKE
	Mrs. Damacharla Kiranmayee Member	Member-SSKE
	Mr. Vallabani Sudhakar Chowdary Member	Managing Director, Mohan Spintex INDIA Limited
	Dr. Baddeti Syam Member	Principal
	• Members of Academic Council	
	Prof. Baddeti Syam	Principal, MIET, Professor, Dept. of ECE
	Mr. Shaik Nanne Saheb	Controller of Examinations, Asso. Professor, Dept. of MECH
	Mr. Yarram Narasimha Rao	I/c. I ³ C&MoUs, Dept. of MBA
	Mr. B Nagarjuna Singh	I/c. IQAC, Dept. of ECE
	Mrs. Mandava Kusuma Kumari	Dean Planning & Execution,
	Prof. T Venu Gopala Rao	R&D, Professor, Dept. of CE
	Mr. Fathe Mohammad	I/c. T&P, Dept. of MECH
	Prof. Banothu Venkakati	Professor, HoD, Dept. of CE
	Mr. Kodamala Naresh	Associate Professor, HoD, Dept. of CE
	Prof. B Sujatha	Professor, Dept. of CE
	Mrs. Oruganti Bhavya Sri	Associate Professor, HoD, Dept. of CSE
	Mrs. Moothukuri Suseela	Associate Professor, HoD, Dept. of ECE
	Prof. Y B V Lakshmi	Professor, Dept. of ECE
	Mr. A Radha Krishna	Associate Professor, HoD, Dept. of MECH
	Mr. Yarram Narasimha Rao	Associate Professor, HoD, Dept. of MBA

	Mr. T V Ramamohana Rao	Associate Professor, HoD, Dept. of BS&H
	Prof. G Venkateswara Rao	Professor, Dept. of BS&H
	Prof. A Vasmsi Krishna	Prof. of ECE, RKCE, Ibrahimpatanam
	Prof. B Prasanna Kumar	Prof. of CSE, Guntur Eng., College, Guntur
	Sri Dasari Bapi Raju	Advocate / Addl. PP, III Addl. Sessions Court-cum-Family Court,
	Mr. G Gopala Rao	Associate Professor, Faculty I/c

• Internal Quality Assurance Cell (IQAC) Committee

	Mr. B NAGARJUNA SINGH	IOAC Coordinator
	Mr. FATHE MOHAMAD	IQAC MEMBER,
	Mr. G GOPALARAO	IQAC MEMBER,
	Mr. ADIRAJU RADHA KRISHNA	HoD ,Mechanical Engineering
	Mr. BANOTHU VENKATI	HoD, Civil Engineering
	Mrs. ORUGANTI BHAVYA SRI	HoD. Computer Science & Engineering
	Mrs. MOTHUKURI SUSEELA	HoD, Electronics & Communication Engineering
	Mr. YARRAM NARASIMHA RAO	HoD, Master of Business Administration
	Mr. T V RAMMOHANA RAO	HoD, BS&H
	<ul style="list-style-type: none"> Frequency of Board Meetings and Academic Advisory Committee 	2 Times in a year

Organization Chart and Process



Nature and Extent of Involvement of Faculty and Students in Academic Affairs /Improvements

- The MIET system of administration is well designed & properly structured in decentralized manner with clearly defined roles for Governing body (GB),

Administrative committee, Academic council (AC), Board of studies (BoS), Finance committee (FC), Internal quality assurance committee(IQAC), Academic advisory committee (AAC), Grievance red resale committee (GRC), Student activity center (SAC), Class review committee (CRC), Anti ragging committee, Anti sexual harassment cell and Academic& student support centers with composition as per norms. Management, Principal, Deans, HoDs, Industry experts, University nominees, Alumni, faculty, staff, parents and students are involved in the policy development, decision making& policy implementation as required. Functions/ Responsibilities are clearly defined for each committee/ Administrator to realize the clearly defined vision admission of the institute. Institute management supports every academic, research& student activity with required infrastructural facilities, operational support, finance and other resources time to time. Healthy working environment is created by the management in the institute with academic freedom, transparency, accountability and faculty on us to the institute at each level of administration. Every one works with dedication, commitment & best efforts with mutual support in an academic eco system for the benefit of student community. The faculty & students periodically meet to assess the goals/ objectives set and the achievements under the guidance of the principal

- Dean Academic Affairs (AA) along with his AA office team seamlessly integrates Teaching-Learning, Research, Innovation& Incubation and Entrepreneurship (I²RE) dynamically with various academic& co curricular activities with due approval of AAC of the institute. Dean AA administers the academic programs and supports principal to explore new instructional& quality initiatives. Dean AA coordinates the activity of curriculum revision periodically and prepares the departments, faculty & staff to take up the challenges of academic autonomy at the institute level. Dean AA is

responsible to set up mechanism for faculty evaluation every semester and generating a constructive feedback for faculty improvement. Dean AA is responsible to set up mechanism for user friendly feedback mechanism from students on courses they have taken

- Prof. I/c IQAC & his faculty team regularly organizes academic quality assurance activities by inviting faculty & industry experts from peer institutions to interact with faculty and students of various departments and ensures for academic quality in the institution. Prof. I/c IQAC oversee faculty recruitment and reviews for reappointment and promotion every year. IQAC publishes academic, research & other achievements every year by capturing required data from all departments/ sections.
- Controller of examinations (CoE) along with his exam branch team ensures for successful conduction of examinations, authentic coding & valuation, tabulation of data & outcome based education (OBE) report generation, timely publication of result and award of degree. Prof. I/c Industry institute interaction cell (I³C) & MoUs will be in front to help UG & PG students to undergo mandatory internships and industrial training with collaboration of industries & CII with the help of department I³C coordinators.
- Prof. I/c Training & Placement (T&P) and his team along with department T&P coordinators and student volunteers takes care of training the students for company specific training, inviting the industry personnel and alumni for core & software placements and ensures for gradual increase in number of placements every year for both UG & PG students.
- Dean Research & Development (R&D) along with department R&D coordinators is taking responsibility of realistic implementation of institute ethics among faculty & student community through Anti plagiarism policy (APP) document in every aspect of academic & research writing. Dean Research & Development (R&D) helps departments to establish recognized research centers by coordinating with the. Dean R&D supervises the research activity in institution by helping

the faculty to apply for research projects/funding through AICTE, DST, UGC, DBT and other funding agencies meeting their deadlines every financial year.

- Dean Planning & Execution (P&E) is the custodian for all the immovable assets of the institution like the land, buildings, roads, drains, sewage, water supply system, electrical power system and other utilities. Dean P&E along with project office team takes care of the maintenance& documentation of institute assets and also ensures for cleanliness & green campus.
- Head of the department (HoD) along with his faculty& staff takes care of dynamic execution of all academic, research & student activities at ground level in the department as per the institute policy decisions approved by GB& AAC with transparency& accountability at each level of implementation.
- Administrative officer (AO) along with his establishment& accounts team plans for periodical meetings of Administrative Committee, Governing Body and Finance Committee and also monitors faculty& staff attendance& other financial matters under the supervision of principal.
- Senior faculty are actively involved as Professor/ Faculty in-charges for various Academic& student support centers include Entrepreneurship Development Centre(EDC), Industry Institute Interaction Cell (I³C), R&D cell, Industrial Consultancy Cell(ICC), Higher Education& Student Counseling (HESC) cell, Library Advisory committee (LAC), Alumni Affairs& External Relations (AA&ER), IQAC, Student activity center (SAC) clubs, Innovation & Incubation Centre (IIC), Centre of Excellences (CoE's), Professional students' bodies/chapters, College Management System (CMS),Campus Networking& Internet (CNI), Course Web (CW), Website Maintenance cell (WMC), Solar Power Plant Maintenance Cell (SPPC), SC/ST cell and SAHASRA Women cell. Faculty nominated in other statutory committees such as Grievance Redrassal committee (GRC), Class review committee (CRC), Hostel committee, Anti ragging committee and Anti sexual harassment cell helps administration to address student issues &

			<p>grievances. Nomination of the faculty & students is purely based on the academic achievements and passion to work with interest & great enthusiasm in an efficient manner to execute all academic & student activities. Faculty & students nominated in various cells/ committees are responsible to ensure that the planning and activities are carried out by providing leadership and efficient management to achieve the institution's goals and objectives of developing students with skills that are holistic. Faculty & students are active participants to ensure that the scope defined for these committees are fulfilled and there is absolute harmony in the Institute. Every student activity enables them to address the needs of the industry irrespective of the challenges that they would face while on their profession/ entrepreneurship or any occupations they would pursue. Multiple functions assigned to the faculty & staff members has been in practice at the institute for decades and the best practices of various committees/ cells are reviewed periodically and systematic procedures are adopted & evaluated to ensure that the academic ecosystem is not disturbed on any day.</p>
		<ul style="list-style-type: none"> Mechanism/Norms and Procedure for Democratic/Good Governance 	<p>MIET demonstrates a strong commitment to excellence in Institutional Mission and Purpose. The Academic Committee and the Governing Body set and support Goals for the Institution and also give the Strategic direction on planning and resourcing as well as setting the ethos and style of Institutional Practice. The Management periodically reviews on the Strengths and Weaknesses and the Willingness to improve. The determination is to strive for the highest standards of achievement.</p> <p>The Strategic Choices the Management of the Institute identified for its positioning are:</p> <ul style="list-style-type: none"> To become Global on Institutes Own Standing To Partner with Global Universities/ Institutes in search of Brand Name To maintain Unique identity by promoting Research and Innovation To become differentiator in the context of Pedagogic approach, Leadership in new frontiers. To support our Strategic Choices in achieving excellence we have been strengthening our Academic Infrastructure on various functions of the

Institute. The most important Areas are:

1. Regulation:

MIET at the outset complies with the Quality and Quantity of the AICTE, UGC and Affiliating University Guidelines while structuring the Education and Administrative Systems and at the same time keep its focus on Outputs and Development along side of Inputs and Control.

2. Governance:

The Institute practices Ethical standards, Openness and Transparency in the Governance and to implement these respective Committees, Councils, Centers and other such Advisory and Academic Committees have been established along with focus on other Areas of the Educational Model as stipulated by AICTE and UGC Guidelines. These include:

Involvement of Governing Body

Academic Council

Academic Advisory Committee

Board of Studies

Industry Institute Interaction Cell

Research and Development Cell

Entrepreneur Development Cell

Placement Cell

Student Mentoring & Career Guidance Cell

Finance Committee

Industrial Consultancy Cell

Alumni Affairs & External Relations Cell

Institute Data Centre

Educational Technology Cell

Internal Quality Assurance Cell

Higher Education & Student Counseling Cell

Website Support Cell

Course Web

College Management Software

Campus Networking and Internet

The most important corner stones of any educational set-up are the Faculty in terms of its Adequacy, Composition, and Quality. MIET is

comfortable in all the three dimensions. The Institute has the Core Faculty to teach the respective Subjects and there is no dependence on the outside visiting Faculty. Student to Faculty Ratio is in compliance to the Regulatory norms which is 1:15. We have a comfortable Faculty Structure in terms of Ph.D. to Non - Ph.D.

The Environment in the Institute is informal and experiential where Faculty is playing the role of Facilitators rather than Conventional Teachers as it is believed that that Student in such an environment are expected to learn more through reflection and assimilation of Ideas / Concepts and Application of

Theory to solving Real-Life issues than mere understanding of Tools and Techniques. Teachers in such a setting are expected to facilitate process of Learning compared to teaching what they intend to.

The Institute has been promoting collegial atmosphere expected in an Educational Institutions; Emotional Bondage between Teachers and Students is strong and the Teachers are considered as Mentors, Coaches and Counselors.

3. Content, Curriculum and Process of Delivery:

MIET with respect to Content and Curriculum is focused on What is taught and how it is taught. The importance of Content and Curriculum is at the highest Pedestal. The emphasis is on the three important

Components of the Content and Curriculum Which are Quality, Relevance and Flexibility. The first two are an absolute necessity to ensure quality education; the last one is assuming importance in the emerging world where change has become ultimate reality. At MIET the Course Content integrates Innovation Incubation Research Entrepreneurship (I²RE) into course teaching.

4. Quality Parameters:

The Regulators primarily focus on Input aspects and that too Quantitative Parameters like number of Faculty and required quantum of Infrastructure. The Institute strictly and sincerely comply with these Guidelines and also lays emphasis on ensuring quality in developing the students holistically to become acceptable by the Industry and Society. The globally prevalent mechanism of enhancing quality through self-

regulation and accreditation which is the need of the hour is a practice at the Institute.

5. Faculty Development and Research:

Research & Development (R & D) Cell aims at motivating, monitoring and developing quality research in the institute. It is positively working on collaborative R& D projects and entering MoUs with industries. It also promotes creativity, research and innovation among the student community.

- To encourage research among the faculty, the institute has the facility of gaining study leave, reimbursing apart of the expenditure incurred in establishing the experimental set-ups for their research and deputing the faculty to national/international conferences with complete registration fee, TA & DA. A separate provision is also made in budget for R & D.
- ***Industrial Consultancy Cell***
A full-fledged Industrial Consultancy Cell has been in existence to extend the consultancy services offered to various government and private organizations. The Cell aim sat building up better Industry-Institute interaction by expanding the consultancy network of the departments, providing a platform to train the undergraduate & postgraduate students to face the real field problems and transferring the technology from academicians to field personal and vice- versa. It has proposals to organize Seminars, Workshops and Training camps for practicing engineers to update their knowledge. Efforts are being made to provide quick and quality consultancy services as per standard norms and procedures.

INTERNAL QUALITY ASSURANCE CELL (IQAC)

The Internal Quality Assurance Cell (IQAC) of the institute records and monitors the quality measures of the institution. It also disseminates the information on quality aspects. It has a rich tradition of bringing out an Annual Report on institutional performance, consisting of the activities rolled out, achievements of faculty and students in terms of academic results, innovation, R& D, Publication, Workshops/ Seminars / Conferences, Training& Placement related

information etc, in order to introspect the organizational performance and for future strategic planning.

ALUMNI AFFAIRS & EXTERNAL RELATIONS (AA & ER) CELL

The Alumni of the institute are a matter of extreme pride to the institution and are key contributors to the development of the institute. In-service performance of our alumni is well appreciated by various national and multi-national corporate and some of them are rewarded by Govt. of India with President Awards. The office of Alumni Affairs & External Relations (AA & ER) strives to involve alumni as a stakeholder in the strategic planning for the institute and take their help in student mentoring, promote research & consultancy relationships between faculty & alumni.

https://mandava.ac.in/wp-content/themes/twentytwentyone/assets/images/5.4.1_Alumni_Association_Certificate_and_Members_Details.pdf

INDUSTRY INSTITUTE INTERACTION CELL(I3C)

The Industry Institute Interaction Cell (I3C) of the institute focuses on interacting with the industry to bridge the gap between the academia and industry. MIET, Jaggayyapeta has been honored with yet another distinction, in the form of institutional member of Confederation of Indian Industries (CII) under College Excellence cluster. Under this program, the faculty is trained in the industries and industrial visits and internships are facilitated for students. CII also organizes CEO speak sessions and guest lectures at institute, to enhance

industry awareness among students & faculty. The other significant programs initiated by industry on campus include: Oracle - Development Program (Certification Training Program), TCS-Power Academy Program (Python Training Program), Govt. of Andhra Pradesh. (Mock Placement tests, Off-campus Placements, Training on Soft Skills, certification Programs).

Higher Education & Student Counseling Cell

Higher Education & Student Counseling Cell (HESC) is conceived with an objective of career guidance and student counseling for Higher

		<p>Education in India or in Abroad. The major activities of the cell are</p> <p>Collection and dissemination of information regarding PG program in foreign and Indian universities.</p> <p>Students counseling and Career guidance or Higher Education Identification of the University/Institute both in India and Abroad Lending Books / Compact Discs related to Competitive exams like CAT, GATE, IES, GMAT, TOEFL, IELTS and GRE etc.</p> <p>Identifying the weaker students in each class and conducting extra classes for them to improve their performance.</p>
<p>Student feedback on institutional Governance/Faculty performance</p>		<p>Student counseling & Students' feedback is made as an integral part of education system at MIET for the benefit of student community. Faculty counselor is attached to 4 to 5 students (counselees) of each class/ section to help students to overcome the difficulties as part of his UG/ PG course of study. Student is given true freedom to interact with his faculty counselor at any time to express his/ her interest or personal problems (if any).</p> <p>Students' feedback on academic facilities provided and on course teacher performance is taken twice in semester, with a primary objective to utilize the students' feedback for improvement of academic teaching & learning resources and also to help the course faculty in identification of their strengths and weaknesses as part of their teaching and evaluation procedures.</p> <p>The Students' feedback from every class /year / section is taken in a very confidential manner through the Class review committee (CRC) meetings and through online feedback twice in semester. CRC consists of HoD, Senior faculty and student class representatives (CRs). The student CRs are nominated by the HoD to take a view from all the students from different profiles and normally consists of the Toppers in the class, Students with average marks and Students securing low marks, Students with good attendance.</p> <p>The Class review committee (CRC) that undertakes this process of faculty evaluation ensures for academic integrity, transparency &</p>

accountability. The students' CRC feedback is obtained through personal interaction/ meeting and also by questionnaire through online on all theory, practical / laboratory courses of respective semester.

Students are advised to share their experiences in confidence as their identity would be kept undisclosed. The CRC feedback is taken in detail on the parameters outlined below and the questionnaire is analyzed and further a Minutes of meeting (MoM) is prepared. The Parameters that are set forth before the student CRs/ students with regard to the faculty performance are:

- a) Organization and preparedness for the class
- b) Promptness in conducting classes
- c) Appropriate use of using different teaching aids (PPT, White Board etc.)
- d) Clarity in presentation
- e) Communication effectiveness
- f) Recommends additional learning resources (Books, Periodicals, Websites, Journals, Conferences etc.,)
- g) Provides timely feedback on Students' performance
- h) Creates comfortable learning environment for the students
- i) Encourages Extracurricular activities(SAC& Professional Activities etc.,)
- j) Helps and counsels on the subject and is available for after class consultations
- k) Interacts and encourages students to ask questions/active participation

Maintain discipline in the class

m)As a Role model Feedback assessment report made on strengths and weaknesses of the course teacher can be viewed by the course teacher for further improvement of his teaching & Subject expertise based on the feedback. The course teachers, who have not performed well, will be given a wide opportunity to improve their skill sets and teaching methodologies by attending technical& teaching courses through FDPs/ STTPs/Workshops/ online SWAYAM MOOCs.

		<p>At MIET, the results of such CRC feedback assessment helped to:</p>
		<ul style="list-style-type: none"> (i) Determine whether the techniques adopted in teaching are having the desired impact on students learning (ii) Monitor whether the teaching Strategies meet course learning outcomes (iii) Identify challenges that students are having in learning the course material (iv) Improve instruction by transforming best teaching practices during the semester
	<ul style="list-style-type: none"> • Grievance Redrassal mechanism for Faculty, Staff and Students 	<p>Grievance Redrassal System is a vital part of any administration. It is the responsibility of the College Administration to provide a secure and contented environment to all its Staff and Students. The Grievance Redrassal Committee has been formed in the College as per the UGC guidelines to redress the grievances of both the staff and the students. Since the inception of the college, the Committee has been under the direct purview of the Principal.</p> <p>The grievances received by the Principal are forwarded to the concerned Committee members who look in to the problems depending upon the seriousness of the issue.</p> <p>The Committee has been continuously striving to take the best efforts possible to create a harmonious and conducive atmosphere to everyone in question.</p> <p>The staff can email their grievances at grievance@mandava.ac.in.</p> <p>Functions of the Grievance Redrassal Committee</p> <ul style="list-style-type: none"> To accept written grievances from students and staff related to the system. To create and implement a mechanism to handle the reported grievances. To forward the findings to the Management if necessary for further action. To listen, record and scrutinize the grievances submitted to them by the Staff and Students and take necessary steps immediately. To attend to the grievances based on the authenticity and gravity of the criticisms made. To represent the grievances to the concerned section which may include maintenance, transport, academic, amenities etc. To convene periodical meetings to discuss whether the grievances have been settled.

		To make a follow-up of these matters at regular intervals till their final disposal. To maintain strict confidentiality, if necessary.
	<ul style="list-style-type: none"> Establishment of Anti Ragging Committee 	Click Here
	<ul style="list-style-type: none"> Establishment of Online Grievance Redrassal Mechanism 	https://mandava.ac.in/grievance/
6	Establishment of Internal Complaint Committee	
	Chairperson	Prof. Y B LAKSHMI ,Professor, Dept. of ECE yblakshmi@mandava.ac.in Mob. No: 8501050508
	Faculty Members(Min:2)	<ol style="list-style-type: none"> Mr. S V D Prasad, Member , Dept. of ME svdprasad@mandava.ac.in Mob.No.9966432654 Mr. Yarram Narasimha Rao, Mob.No.7330994686
	Non-Teaching staff(Min:2)	<ol style="list-style-type: none"> Smt.G Prameela prami.vasu@gmail.com Mob. No. 9032457992 Mr. N Papa Rao Mob. No :9490392230
	Student Members (Min: 3) If matter involves students	<ol style="list-style-type: none"> Betukuri Karthik Department of CE, Bollepogu Suresh Department of CSE, Panchakarla Naga Pavan Department of ECE
	<ul style="list-style-type: none"> Establishment of Committee for SC/ST 	https://mandava.ac.in/wp-content/uploads/2025/01/MIET-SC-ST-Committee-Signed-2024-12-13.pdf
	<ul style="list-style-type: none"> Internal Quality Assurance Cell 	https://mandava.ac.in/wp-content/uploads/2025/01/IQAC_20241217191609.pdf
7	<ul style="list-style-type: none"> Name of Programs approved by AICTE 	
	1	B.Tech- <i>Civil Engineering</i>
	2	B.Tech- <i>Mechanical Engineering</i>
	3	B.Tech- <i>Computer Science &Engineering</i>
	4	B.Tech- <i>Electrical and Electronics Engineering</i>
	5	B.Tech- <i>Electronics & Communication Engineering</i>
	6	B.Tech – <i>Computer Science and Engineering(Artificial Intelligence and Machine Learning)</i>
	7	M.Tech- <i>Structural Engineering</i>
	8	M.Tech- <i>Embedded System and VLSI</i>
	9	M.Tech- <i>Machine Design</i>
	10	M.Tech- <i>Computer Science &Engineering</i>

	11	Management	<i>Master of Business Administration</i>				
	12		<i>Integrated MBA</i>				
<ul style="list-style-type: none"> Program wise Intake&AdmittedDetailsduringAY2023-24 							
	Dept	Name of the Course	Level	Duration	Number Of Seats	Number of Admissions	Fee
	CE	Civil Engineering	UG	4Years	60		43000/-
	ME	Mechanical Engineering			60		
	CSE	Computer Science& Engineering			60		
	EEE	Electrical and Electronics Engineering			30		
	ECE	Electronics& Communication Engineering			45		
	CSE	Computer Science and Engineering(AI&ML)			60		
	CE	Structural Engineering	PG	2Years	24	12	55000/-
	ME	Machine Design			12	04	
	CSE	Computer Science& Engineering			12	01	
	ECE	Embedded Systems &VLSI			12	06	
	MGMT	Master of Business Administration			120	56	44400/-
	MGMT	Integrated MBA			60		27000/-
<ul style="list-style-type: none"> Program wise, Cutoff Ranks–General quota last year 							
	S.No.	Name of the Course			2023-24		
	1.	Civil Engineering			125331 - 177452		
	2.	Mechanical Engineering			113888 - 162341		
	3.	Computer Science &Engineering			105640 - 166990		
	4.	Electrical and Electronics Engineering			-----		
	5.	Electronics & Communication Engineering			86507 - 177536		
	6.	Computer Science& Engineering (Artificial Intelligence Machine Learning)			61989 - 173466		
	7.	Structural Engineering			-----		
	8.	Machine Design			-----		
	9.	Computer Science &.Engineering			-----		

	10.	Embedded Systems &VLSI	-----
	11.	Master of Business Administration	4183 -36903
	12.	Integrated MBA	-----

	<ul style="list-style-type: none"> Program wise, Placement Details last three years 		
	<ul style="list-style-type: none"> Placement Facilities 		View
	<ul style="list-style-type: none"> Whether the Collaboration Program is approved by AICTE? If not whether the Domestic/Foreign University has applied to AICTE for approval 		No

8	<ul style="list-style-type: none"> Faculty Details 						
----------	---	--	--	--	--	--	--

S.No	Title	First Name	Last Name	Designation	Appointment Type	Department	Highest Degree
1	Dr.	BANOTHU	VENKATI	Associate Professor	Regular	Civil Engineering	PhD
2	Mr.	ISLAVTHU	CHANDU	Associate Professor	Regular	Civil Engineering	M.TECH
3	Mr.	ANUMULA	NAGARAJU	Assistant Professor	Regular	Civil Engineering	M.TECH
4	Dr.	BURRI	SUJATHA	Professor	Regular	Civil Engineering	PhD
5	Dr.	THADEPALLI	venu GOPALA RAO	Professor	Regular	Civil Engineering	PhD
6	Mr.	MUTYALA	NAVEEN	Assistant Professor	Regular	Civil Engineering	M.TECH
7	Mr.	KODAMALA	NARESH BABU	Assistant Professor	Regular	Civil Engineering	M.TECH
8	Mr.	BANOTHU	RAMESH	Assistant Professor	Regular	Civil Engineering	M.TECH
9	Ms.	KANNEBOINA	RENUKA	Assistant Professor	Regular	Civil Engineering	M.TECH
10	Mr.	MAMIDALA	SAI KUMAR	Assistant Professor	Regular	Civil Engineering	M.TECH
11	Mr.	KASIMALLA	RAVINDRA	Assistant Professor	Regular	Civil Engineering	M.TECH
12	Ms.	ANNAPU	SHIRISHA	Assistant Professor	Regular	Civil Engineering	M.TECH
13	Mrs.	ORUGANTI	BHAVYA SRI	Assistant Professor	Regular	Computer Science & Engineering	M.TECH
14	Mr.	DARAVAT	VENKATESWARLU	Assistant Professor	Regular	Computer Science & Engineering	M.TECH
15	Mr.	M SUNDER	PAUL SINGH	Assistant Professor	Regular	Computer Science & Engineering	M.TECH
16	Mr.	KATRALA	SRINIVASA RAO	Assistant Professor	Regular	Computer Science & Engineering	M.TECH
17	Mr.	ITHAGANI	SAIDULU	Assistant Professor	Regular	Computer Science & Engineering	M.TECH
18	Mr.	PENTELE	RAMANA	Assistant Professor	Regular	Computer Science & Engineering	M.TECH
19	Mr.	GERA	RAMESH	Assistant Professor	Regular	Computer Science & Engineering	M.TECH
20	Mr.	YATHAM	THIRUMALA NAYUDU	Assistant Professor	Regular	Computer Science & Engineering	M.TECH

21	Mr.	VALLALA	LINGAIAH	Assistant Professor	Regular	Computer Science & Engineering	M.TECH
22	Mr.	KATTA	SRINIVASARAO	Assistant Professor	Regular	Computer Science & Engineering	M.TECH
23	Mrs.	DAMMA	PRATHYUSHA	Assistant Professor	Regular	Computer Science & Engineering	M.TECH
24	Mr.	DENDUKURU	RAMA MANOHAR	Assistant Professor	Regular	Computer Science & Engineering	M.TECH
25	Mrs.	NUTHALAPATI	MOUNICA	Assistant Professor	Regular	Computer Science & Engineering	M.TECH
26	Mr.	ANNAMCHINNI	DILEEP KUMAR	Assistant Professor	Regular	Computer Science & Engineering	M.TECH
27	Ms.	KANNEPOGU	KOKILA	Assistant Professor	Regular	Computer Science & Engineering	M.TECH
28	Ms.	PALLAM	RAJESWARI	Assistant Professor	Regular	Computer Science & Engineering	M.TECH
29	Mr.	BANOTHU	NARASIMHARAO	Assistant Professor	Regular	Computer Science & Engineering	M.TECH
30	Mr.	VINAYAKUDU	INAPANUTH	Assistant Professor	Regular	Computer Science & Engineering	M.TECH
31	Dr.	BADDETI	SYAM	Principal	Regular	Electronics & Communication Engineering	PhD
32	Mr.	BHUKYA	SUBHAKARA RAO	Associate Professor	Regular	Electronics & Communication Engineering	M.TECH
33	Mrs.	MOTHUKURI	SUSEELA	Associate Professor	Regular	Electronics & Communication Engineering	M.TECH
34	Mr.	BONDILI	NAGARJUN SINGH	Associate Professor	Regular	Electronics & Communication Engineering	M.TECH
35	Mr.	GERA	GOPALA RAO	Assistant Professor	Regular	Electronics & Communication Engineering	M.TECH
36	Dr.	Y BHASKARA	LAKSHMI	Professor	Regular	Electronics & Communication Engineering	PhD
37	Mr.	DAGGUPATI	VEERABABU	Assistant Professor	Regular	Electronics & Communication Engineering	M.TECH
38	Mr.	TALLUPULA	RAMESH	Assistant Professor	Regular	Electronics & Communication Engineering	M.TECH
39	Mrs.	MEKARAVU	RAMADEVI	Assistant Professor	Regular	Electronics & Communication Engineering	M.TECH
40	Mrs.	TIPPIREDDY	HEMALA	Assistant Professor	Regular	Electronics & Communication Engineering	M.TECH
41	Mrs.	VELISETTI	HARITHA	Assistant Professor	Regular	Electronics & Communication Engineering	M.TECH
42	Mrs.	M SANTHI	LAKSHMI	Assistant Professor	Regular	Electronics & Communication Engineering	M.TECH
43	Mr.	GADARA	VENKATESH	Assistant Professor	Regular	Electronics & Communication Engineering	M.TECH
44	Mr.	THOTA	RAJU	Assistant Professor	Regular	Electronics & Communication Engineering	M.TECH
45	Mr.	KAKANI	CHEKRAPANI	Assistant Professor	Regular	Electrical & Electronics Engineering	M.TECH

46	Mrs.	VEMAPATI	SWATHI	Assistant Professor	Regular	Electrical & Electronics Engineering	M.TECH
47	Mr.	KUMMARI	NARESH	Assistant Professor	Regular	Electrical & Electronics Engineering	M.TECH
48	Mr.	AMBATI	CHINNAMMAYE	Assistant Professor	Regular	Electrical & Electronics Engineering	M.TECH
49	Dr.	NAIDU	VINOD CHOWDARY	Professor	Regular	Mechanical Engineering	PhD
50	Mr.	GORANTLA	SRINIVASULU	Associate Professor.	Regular	Mechanical Engineering	M.TECH
51	Mr.	A RADHA	KRISHNA	Associate Professor.	Regular	Mechanical Engineering	M.TECH
52	Mr.	FATHE	MOHAMMAD	Assistant Professor	Regular	Mechanical Engineering	M.TECH
53	Mr.	DOVARI	KAPIL DEV	Assistant Professor	Regular	Mechanical Engineering	M.TECH
54	Mr.	S V DURGA	PRASAD	Associate Professor	Regular	Mechanical Engineering	M.TECH
55	Mr.	BHUKYA	SAIDA	Assistant Professor	Regular	Mechanical Engineering	M.TECH
56	Mrs.	KATTA	MANASA	Assistant Professor	Regular	Mechanical Engineering	M.TECH
57	Mr.	KODATI	AVINASH	Assistant Professor	Regular	Mechanical Engineering	M.TECH
58	Mr.	SK NANNE	SAHEB	Assistant Professor	Regular	Mechanical Engineering	M.TECH
59	Mr.	DHARAVATHU	RAMUDU	Assistant Professor	Regular	Mechanical Engineering	M.TECH
60	Mr.	BANOTHU	VINOD	Assistant Professor	Regular	Mechanical Engineering	M.TECH
61	Mr.	YARRAM	NARASIMHARAO	Associate Professor	Regular	Master of Business Administration	MBA
62	Mr.	BHIMAVARAPU	SWAMY	Assistant Professor	Regular	Master of Business Administration	MBA
63	Mrs.	CHINTALA	VINODA	Assistant Professor	Regular	Master of Business Administration	MBA
64	Mr.	GOTEMUKKALA	NARESH	Assistant Professor	Regular	Master of Business Administration	MBA
65	Mr.	BHUKYA JWALA	PAVAN KUMAR	Assistant Professor	Regular	Master of Business Administration	MBA
66	Mr.	KATRALA	LAKSHMI NARAYANA	Assistant Professor	Regular	Master of Business Administration	MBA
67	Mr.	SHAIK	MASTAN VALI	Assistant Professor	Regular	Master of Business Administration	MBA
68	Mr.	NALAJALA	VENU GOPAL	Assistant Professor	Regular	Master of Business Administration	MBA
69	Mrs.	TEJASWINI	CHERUKUMALLA	Assistant Professor	Regular	Master of Business Administration	MBA
70	Mr.	YARRAM	SATEESH	Assistant Professor	Regular	Master of Business Administration	MBA
71	Mr.	VEMANA	GOPI	Assistant Professor	Regular	Master of Business Administration	MBA
72	Mr.	KOMMINENI	SANDEEP	Assistant Professor	Regular	Master of Business Administration	MBA
73	Mrs.	VADLAMUDI	DEEPTHI	Assistant Professor	Regular	Master of Business Administration	MBA

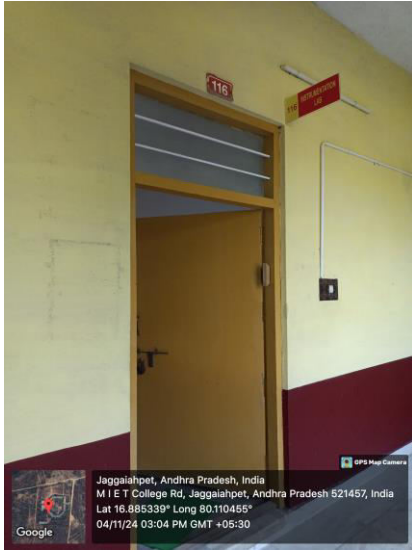
74	Mrs.	THAMISEETI	BINDU	Assistant Professor	Regular	Master of Business Administration	MBA
75	Mr.	MARAM	VIJAY KUMAR	Assistant Professor	Regular	Master of Business Administration	MBA
76	Mr.	TATINENI VENKATA	RAMMOHANA RAO	Associate Professor	Regular	BH&S	M.Sc
77	Mr.	GARIKAPATI	VENKATESWARA RAO	Professor	Regular	BH&S	PhD
78	Mr.	BATTULA	VENKATA KRISHNA RAO	Associate Professor	Regular	BH&S	M.Sc
79	Mrs.	MALLADI	RAJYA LAKSHMI	Assistant Professor	Regular	BH&S	M.Sc
80	Mr.	ATHOTA	PAVAN KUMAR	Assistant Professor	Regular	BH&S	M.Sc
81	Mrs.	GANTELA	ARUNA	Assistant Professor	Regular	BH&S	M.Sc
82	Mr.	ANATHAVARAPU	ANURADHA DEVI	Assistant Professor	Regular	BH&S	M.Sc
83	Mrs.	NALLANAGULA	PAVANI	Assistant Professor	Regular	BH&S	M.Sc
84	Mrs.	KATHULA	ANJALI	Assistant Professor	Regular	BH&S	M.Sc
85	Mr.	CH SEETHA	RAMANJANEYULU	Assistant Professor	Regular	BH&S	M.Sc
86	Mrs.	PARA	SUBBARAO	Assistant Professor	Regular	BH&S	M.Sc
87	Mrs.	KOTHA	HARIKA	Assistant Professor	Regular	BH&S	M.Sc
88	Mrs.	CHALLA	SOUNDARYA	Assistant Professor	Regular	BH&S	M.Sc
89	Mrs.	PIPPIRISETTI	NIRMALA	Assistant Professor	Regular	BH&S	M.Sc
90	Mr.	PULLAIAH	VALLAMKONDA	Assistant Professor	Regular	BH&S	M.Sc
91	Mr.	BHAGAVATUL	A J RAM ASARMA	Assistant Professor	Regular	BH&S	M.Sc

9	FEE						
	Fee Particulars	B.Tech	M.Tech.	MBA			
	Details of fee as approved by State Fee Committee, for the Institution	Rs.43,000/-per annum (from 2023-24 AY)	Rs.55,000/per annum (from 2023-24AY)	Rs.44400/per annum (from 2023-24 AY)			
	Time Schedule for payment of fee for the entire program	Full fee at the beginning of Academic Year	50%-I Semester 50%-II Semester	Full fee at the beginning of Academic Year			
	No of Fee waivers granted with amount and name of students	100%					
	Number of Scholarship offered by the Institution, duration and amount	Click link : https://mandava.ac.in/criteria-5/					

	Criteria for fee waivers / Scholarship	
	Estimated cost of Boarding and Lodging in Hostels	Rs.45,000/-per annum
10	<ul style="list-style-type: none"> Admission 	
	Number of seats sanctioned with the year of approval	Click Here
	Number of students admitted under various categories each year in the last three years	
11	Admission Procedure	As notified by the Govt. of AP
	Particulars	Details
	Mention the admission test being followed, name and address of the Test Agency and its URI. (Website)	<p>AP EAPCET(Andhra Pradesh Engineering Agricultural and Pharmacy Common Entrance Test), AP PGECET (Andhra Pradesh Post Graduate Engineering Common Entrance Test)& AP ICET (Andhra Pradesh Integrated Common Entrance Test)</p> <p>Andhra Pradesh State Council of Higher Education, NEELADRI TOWERS, 6TH BATTALIAN ROAD, Mangalagiri, Andhra Pradesh 522503</p> <p>Links:</p> <p>AP EAPCET: https://eapcetsche.aptonline.in/EAPCET/</p> <p>AP PGECET : https://pgecetsche.aptonline.in/PGECET/Views/index.aspx</p> <p>AP ICET : https://icetsche.aptonline.in/ICET/Views/index.aspx</p>
	Number of seats allotted to different Test Qualified candidate separately (AIEEE / CET (State conducted test / University tests / CMAT /GPAT) / Association Conducted test)	<p>70% of the intake capacity, the seats is allotted to the students who have qualified in the state entrance examination AP EAMCET,</p> <p>AP ECET,AP PGEET& AP ICET conducted by Higher Education Department of Andhra Pradesh State Government based on the entrance merit rank.</p> <p>10%EWS 30%oftheseatsarefilledbythemanagement.</p>

	<p>The waiting list shall be activated only on the expiry of date of main list</p>	<p>The Admissions are done based on the Criteria of Merit. The Process involves release of Advertisement calling for Applications with required Documents, Verification of Documents and Admission confirmed based on Merit and Scrutiny of the Documents and placed on the Website of the Institute. In all there will be two Lists of Admitted Students and each time the due process of verification is done and up loaded. After the second List, the available Seats will again be advertised for Spot Admission on a First come First Admitted basis and if there is Competition again Merit will be the basis for confirmation of Admission.</p> <p>After Admission the final List will be uploaded on the Web site and the same submitted to the Andhra Pradesh State Higher Education Council (AP SCHE) for approval and records.</p> <p>APSCHE will then give us the approved list along with the Students admitted through State Counseling for the 70% of State Quota.</p>
	<p>The policy of refund of the fee, in case of withdrawal, Shall be clearly notified</p>	<p>As per the rules and regulations of AICTE and Andhra Pradesh State Higher Education Council (AP SCHE)</p>
12	Results of Admission Under Management seats/Vacant Seats	
	<p>Composition of selection team for admission under Management Quota with the brief profile of members (This information be made available in the public domain after the admission process is over)</p>	<p>As per APSCHE Guidelines</p> <p>https://cets.apsche.ap.gov.in/APSCHE/APSCHEPOT/APSCHEHome_Spot.aspx</p>
	<p>Score of the individual candidate admitted Arranged in order or merit</p>	
	<p>List of candidate who have Been offered admission</p>	
13	List of Applicants	
	<p>Waiting list of the candidate in order of merit to be operative from the last date of joining of the First list candidate</p>	<p>As per APSCHE Guidelines</p>
	<p>List of the candidate who joined within the date, vacancy position in each category before operation of waiting list</p>	<p>https://cets.apsche.ap.gov.in/APSCHE/APSCHEPOT/APSCHEHome_Spot.aspx</p>
15	Information of Infrastructure and Other Resources Available	

INSTRUMENTATION LAB



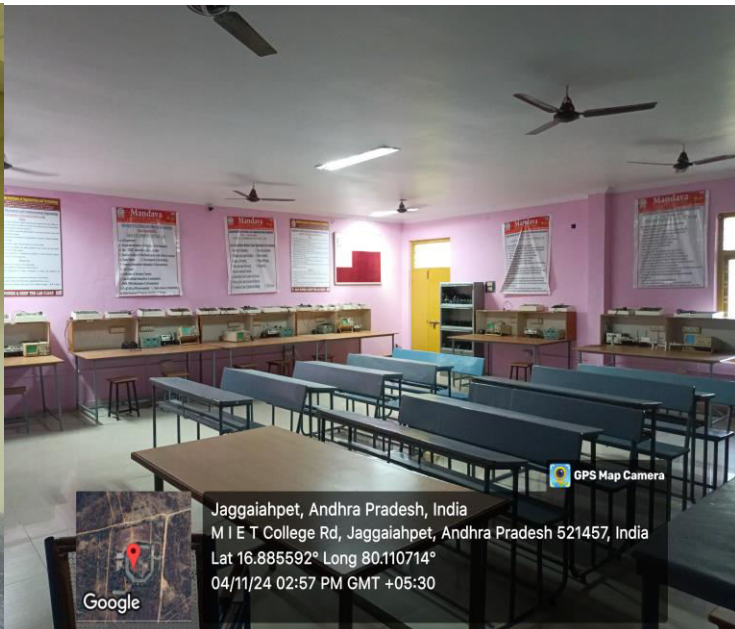
FM LAB



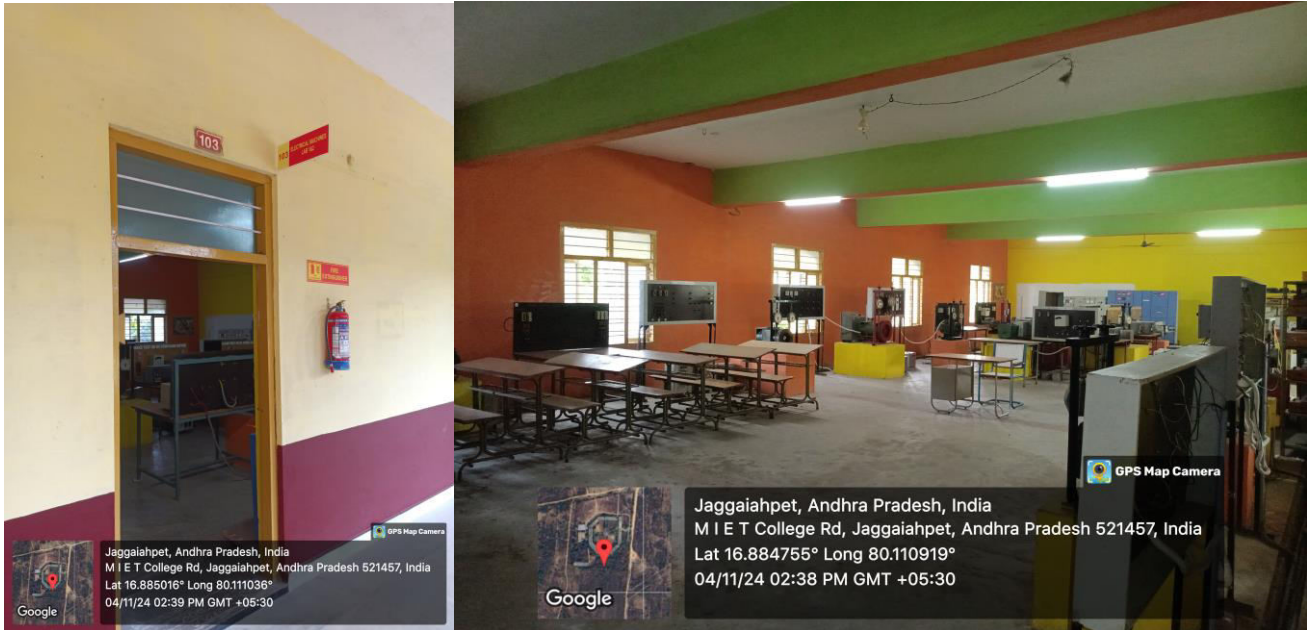
SM LAB



ANALOG COMMUNICATION LAB / DIGITAL COMMUNICATION LAB STLD LAB/MWSC LAB



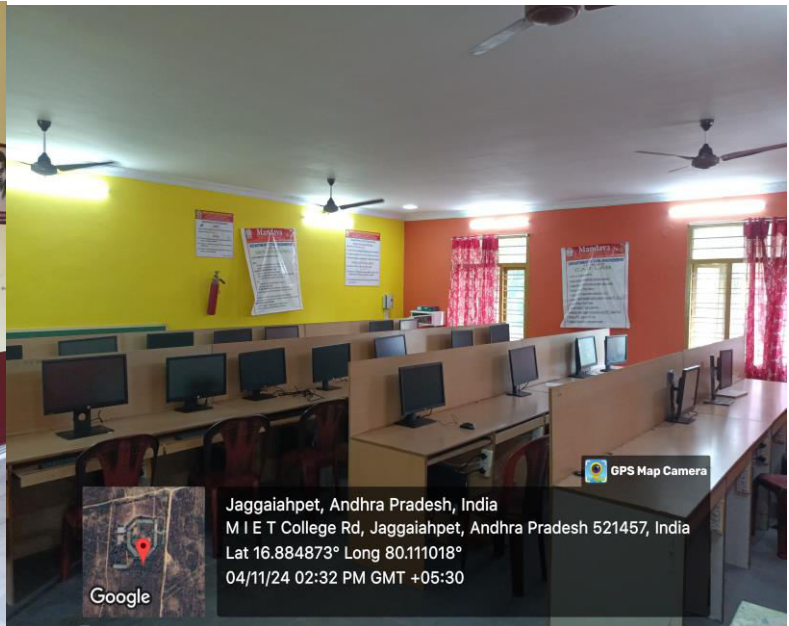
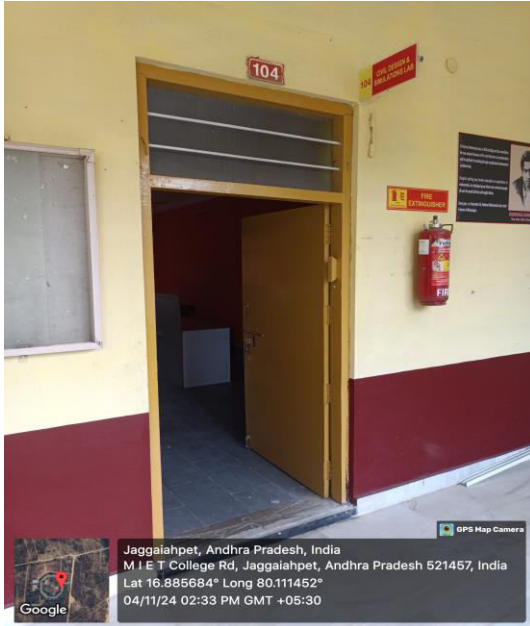
ELECTRICAL MACHINES LAB-1&2



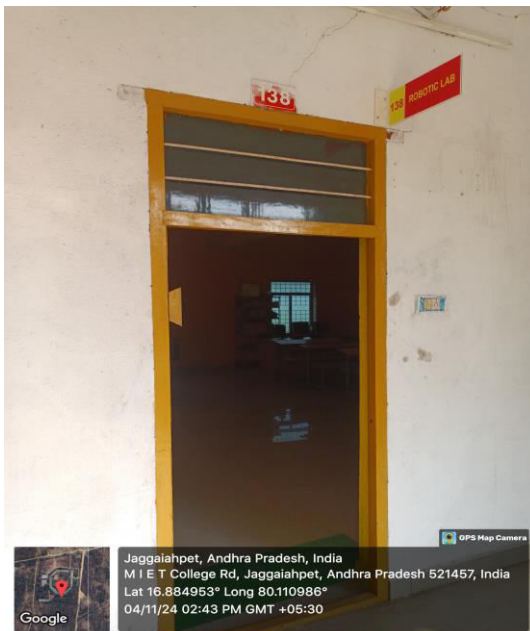
MECHANICAL SIMULATIONS LAB



Civil Design & Simulations LAB



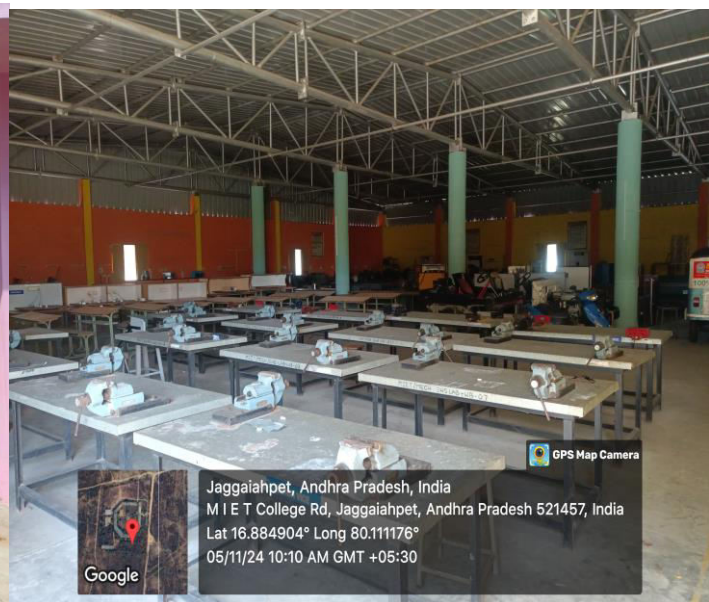
Robotic Lab



SURVEYING & EG LAB



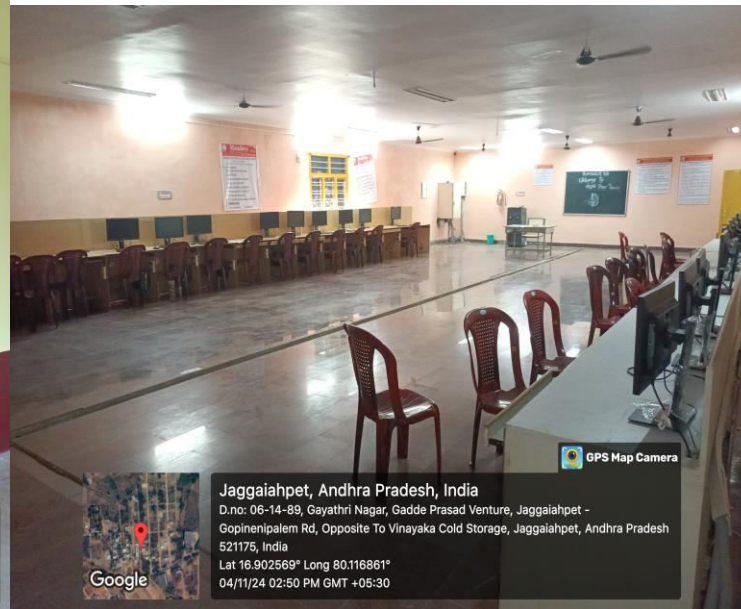
ENGINEERING WORKSHOP LAB



GTE & TE LAB



MICRO PROCESSORS/DSPLAB/DICD Lab





LH01-LECTURE HALL ENTRANCE



LH01-LECTURE HALL INNER



LH02-LECTURE HALL ENTRANCE



LH02-LECTURE HALL INNER

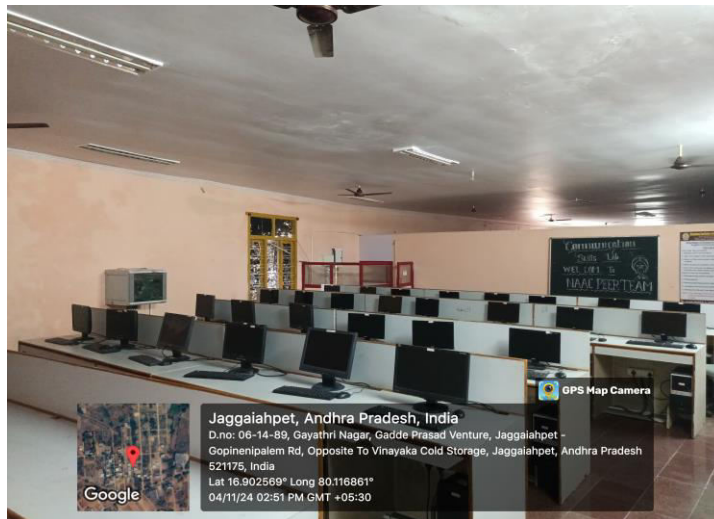


LH03-LECTURE HALL ENTRANCE



LH03-LECTURE HALL INNER

LANGUAGE LABORATORY



Library			
	Name of the Program	No. of Titles	No. of Volumes
	Total UG&PG Programs	4979	23064
<p>❖ List of online National/International Journals subscribed</p> <p>a. Print National/International Journals : 89</p> <p>b. Online Journals :1550</p>			
	E-Library facilities	<p>DIGITAL LIBRARY: The digital library has campus LAN connectivity through computer center and is connected to web server. 15 Computers are installed for browsing. The Institution has subscription of AICTE recommended E-Journals package with which we can access E-Journals & E-Books of ASCE, ASME, ELSEVIER-Science Direct, IEEE, Springer Links, J-GATE(S&MS) NDL& N-LIST.</p> <p style="text-align: center;">SeatingCapacity:15</p> <p>HP Desktop 466-012iL Intel Corei3-4170 Intel Chipset 4GB RAM, 1TB Hard Disk ATX Cabinate Key Board, Optical Mouse and 18.5 ‘LEDHP Monitor, 2 TB +4 TB +4 TB Hard Disk (External). 10TB HD and DLP Projector & Screen</p>	
Computing Facilities			
	Internet Bandwidth	400 Mbps	
	Number and configuration of System	444(Intel Core to Duo, Corei3,Corei5 Systems)	
	Total number of system connected by LAN	444	
	Total number of system connect by WAN	444	
	Major software packages available	YES, Microsoft 365A3 for faculty. Application Software’s: MATLAB Campus Wide License	

Special purpose facilities available		
Innovation Cell	<p><i>Innovation Cell</i> <i>(Institution's Innovation Council)</i></p> <ol style="list-style-type: none"> 1. Incubation Centre (DiscussionRoom-1&2). 2. Incubation Centre Pitching Hall. <p>The institute has a full-fledged Innovation Incubation Center and it is able to provide innovative environment to our young budding Engineers. By organizing various events good number of innovative ideas, are invited, that have potential to be incubated and turn them out Into business opportunities.</p> <p>The institute is granted with 'Institution's Innovation Council (IICs)' by Ministry of Human Resource Development (MHRD), Govt. of India. It has established 'MHRD's Innovation Cell (MIC)' to systematically foster the culture of Innovation amongst all Higher Education Institutions (HEIs). The primary mandate of MIC is to encourage, inspire and nurture young students by supporting them to work with new ideas and transform them into prototypes while They are informative years. A network of these IICs was established to promote innovation in the Institution through multitudinous modes Leading to an innovation promotion eco-system in the campuses.</p> <p>Major focus of IIC</p> <ol style="list-style-type: none"> 1. To create a vibrant local innovation ecosystem. 2. Start-up supporting Mechanism in HEIs. 3. Prepare institute for Atal Ranking of Institutions on Innovation Achievements Framework. 4. Establish Function Ecosystem for Scouting Ideas and Pre-Incubation of Ideas. 5. Develop better Cognitive Ability for Technology Students. 	
Compliance of the National Academic Depository (NAD), applicable to PGCM/ PGDM Institutions and University Departments	---	
<ul style="list-style-type: none"> List of facilities available 		
Games and Sports Facilities	Click Here	
Extra-Curricular Activities	Click Here	
Soft Skill Development Facilities	Separate Skills Lab is facilitated with Computer LCD Projector ,Mike set and other Audio devices	
<ul style="list-style-type: none"> Teaching and Learning Process 		
Curriculum and Syllabus for each of the programs as approved by the	B.Tech.(CE)	Click Here
	B.Tech.(ME)	Click Here

	University	B.Tech.(ECE)	Click Here
		B.Tech.(CSE)	Click Here
		B.Tech.(EEE)	Click Here
		B.Tech. (CSE-AI&ML)	Click Here
	Academic Calendar of the Institute	Click Here	
	Academic Time Table with the name of The Faculty members handling the Course	Click Here	
	Internal Continuous Evaluation System And place	As JNTUK Academic Regulations	
	Student's assessment of Faculty, System in place	https://mandava.ac.in/wp-content/themes/twentytwentyone/mandava/Feedback/main.html	
	<ul style="list-style-type: none"> For each Post Graduate Courses give the following 		
	Curriculum and Syllabus	M.Tech.(SE&C)	Click Here
		M.Tech. (ME)	Click Here
		M.Tech.(CSE)	Click Here
		M.Tech.(ES&VLSI)	Click Here
		MBA	Click Here
		Integrated MBA	Click Here
Special Purpose			
	Software, all design tools in case		
	Academic Calendar and frame work		
16	Enrolment of Students in the last 3 years	Click Here	
17	List of Research Projects / Consultancy Works		
	Number of Projects carried out, funding agency, Grant received	Click Here	
	Publications (if any) out of research in last three years out of masters projects	Click Here	
	Industry Linkage	Click Here	
	MoUs with Industries(Minimum3)	Click Here	
	<p>Faculty and students encouraged to visit industries for field studies. Departments are Encouraged to make their courses of study relevant to industry. Industrial visits, lectures by industry experts and domain experts are regularly conducted. To have better Industry Academia interface, the institute has been pursuing periodically on the needs of industry and the curriculum. Civil Engineering Board of Studies is having Industry representation and their involvement in the program design. To have an industry interaction the department is strengthen by the following organizations IGBC, ICI, ISTE and IEI.</p>		

	The institution has signed MoU's with Confederation of Indian Industry (CII), LEED, KSN Engineers, KPCL, Grafix, Infomile	
18	LoA and subsequent EoA till the current Academic Year	https://mandava.ac.in/aict-e-approval/
19	Accounted audited statement for the last three years	Click Here
20	Best Practices adopted, if any	http://mandava.ac.in/bestpractice